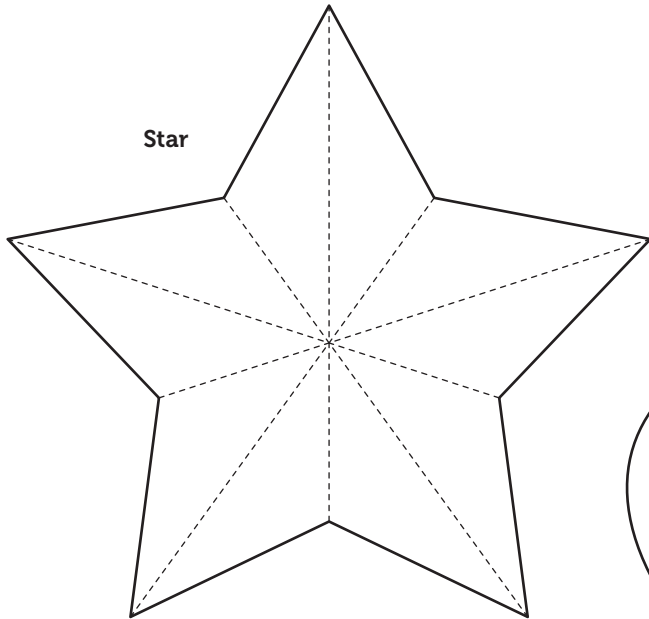


TEMPLATES

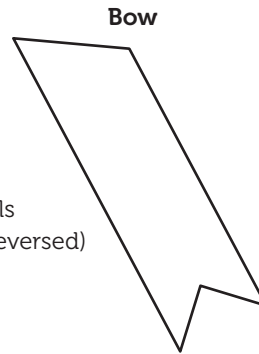
CUT AND FOLD CARD COLLECTION

Use actual size unless otherwise specified.



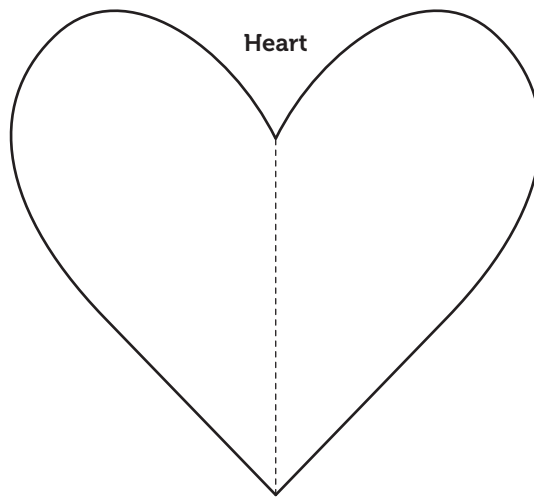
Star

Score and fold along dotted lines



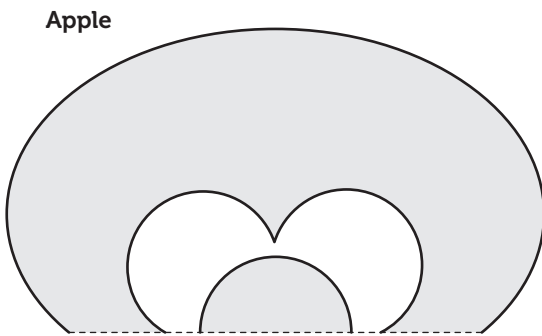
Bow

Tails
Cut 2 (1 reversed)



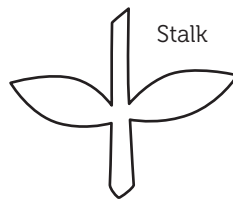
Heart

Score and fold along dotted line



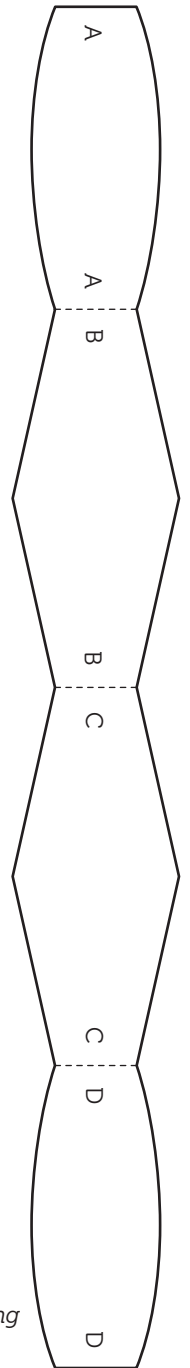
Apple

Apple
Cut along solid lines; score and fold along dotted line



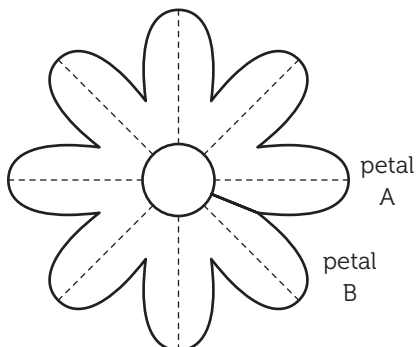
Stalk

Bow
Score and fold along dotted lines

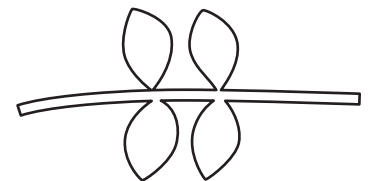
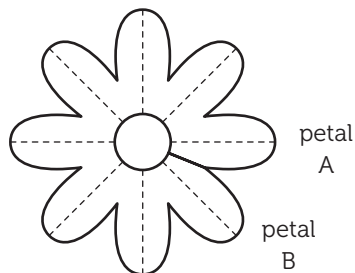


Flower

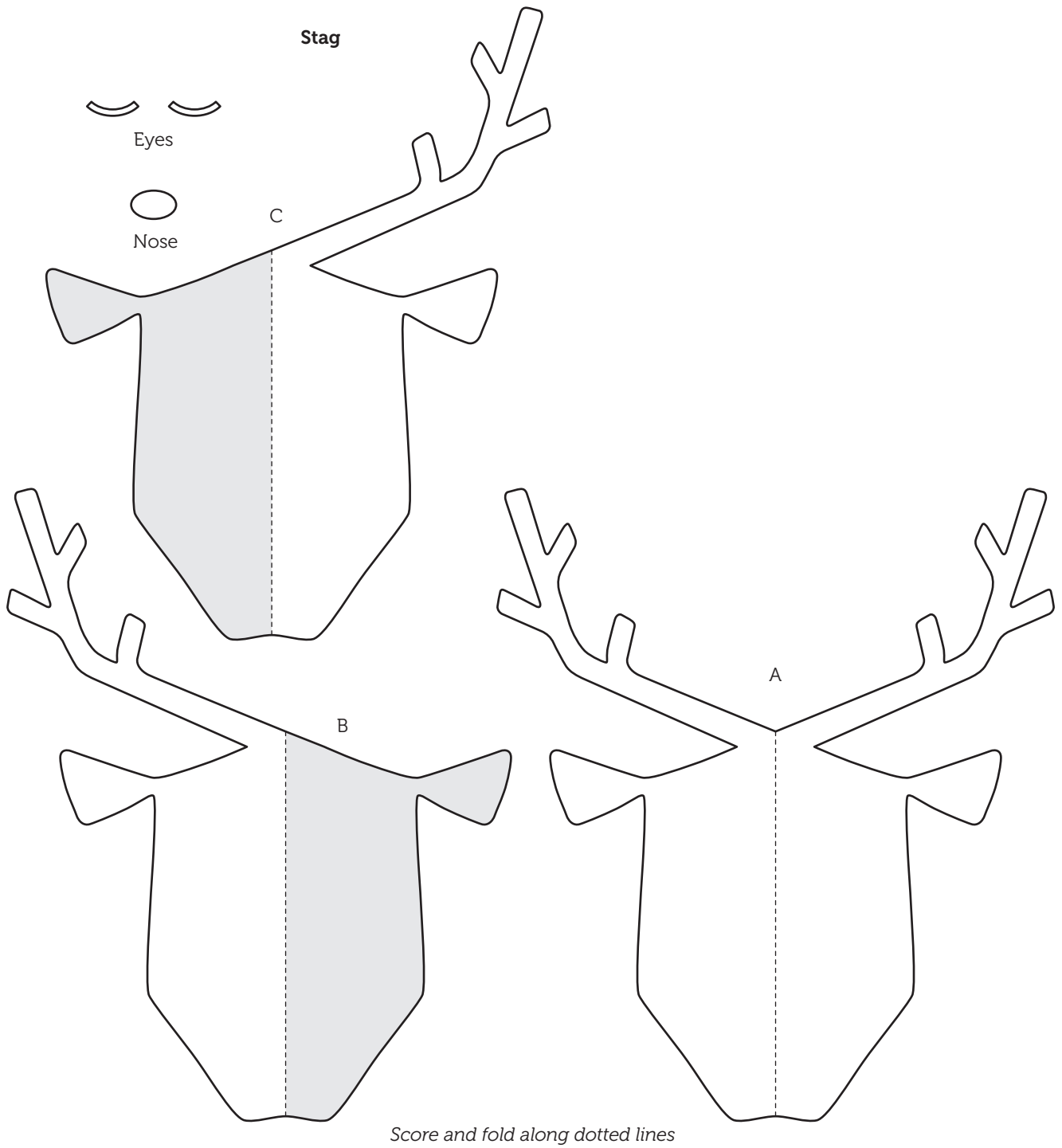
Large flower



Small flower

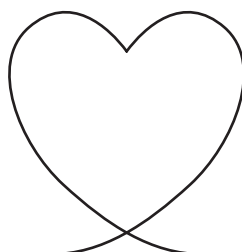


Stems



STITCHED PHOTO NAPKIN RINGS

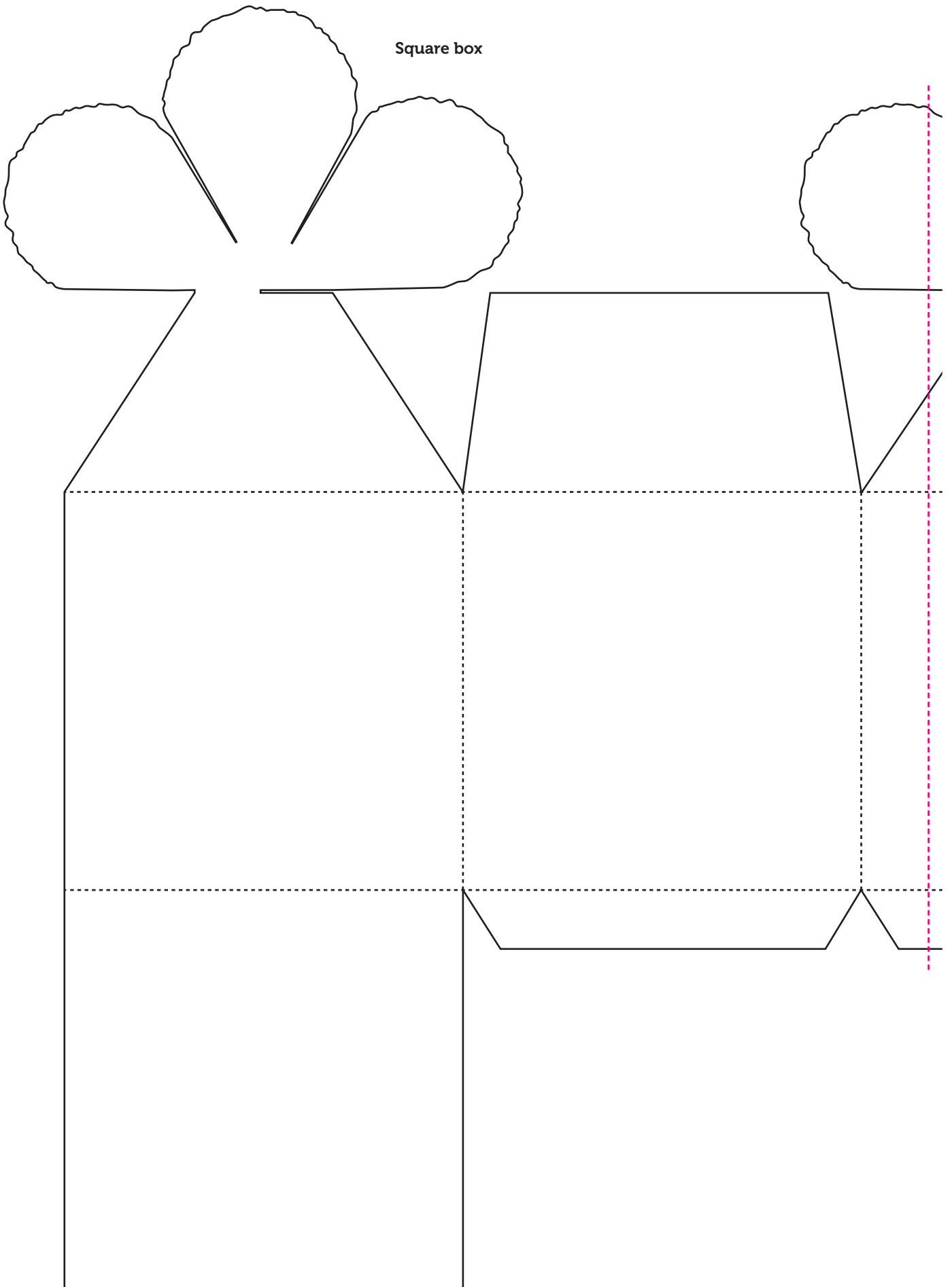
Heart embroidery motif

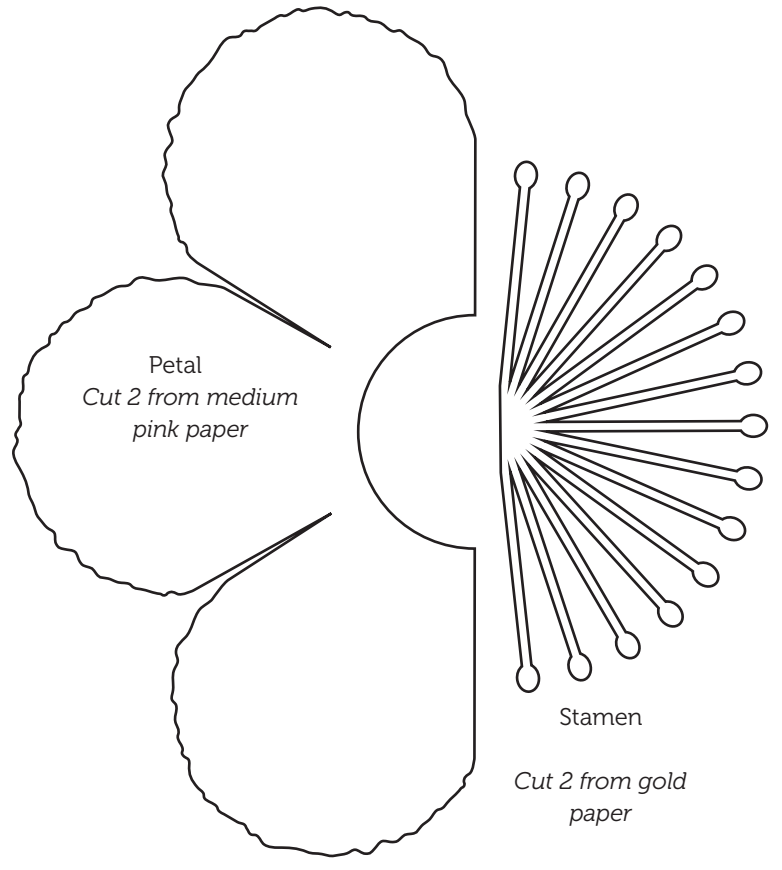


CUT AND CLOSE FLOWER BOXES

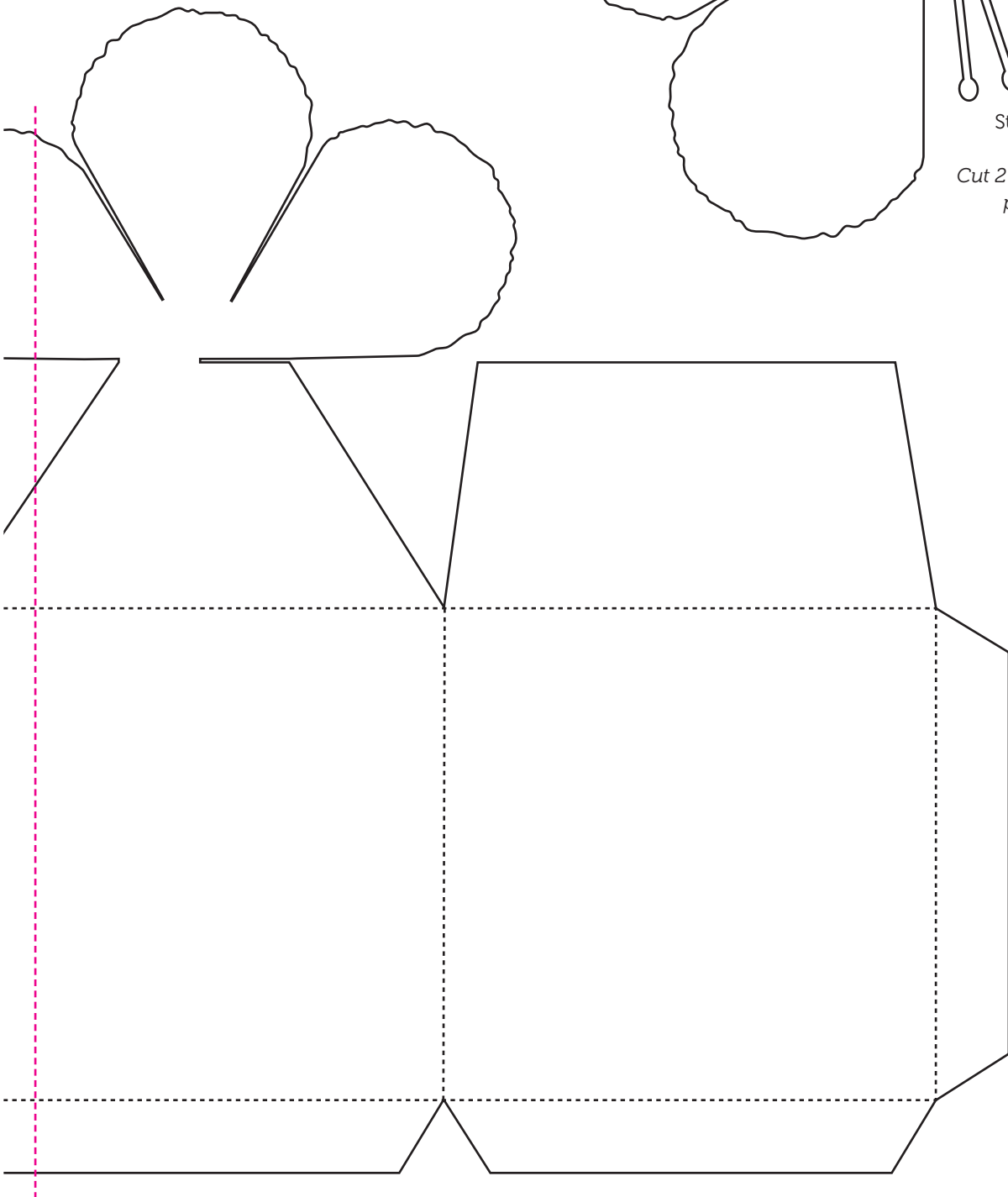
Score and mountain fold along dotted lines

Square box



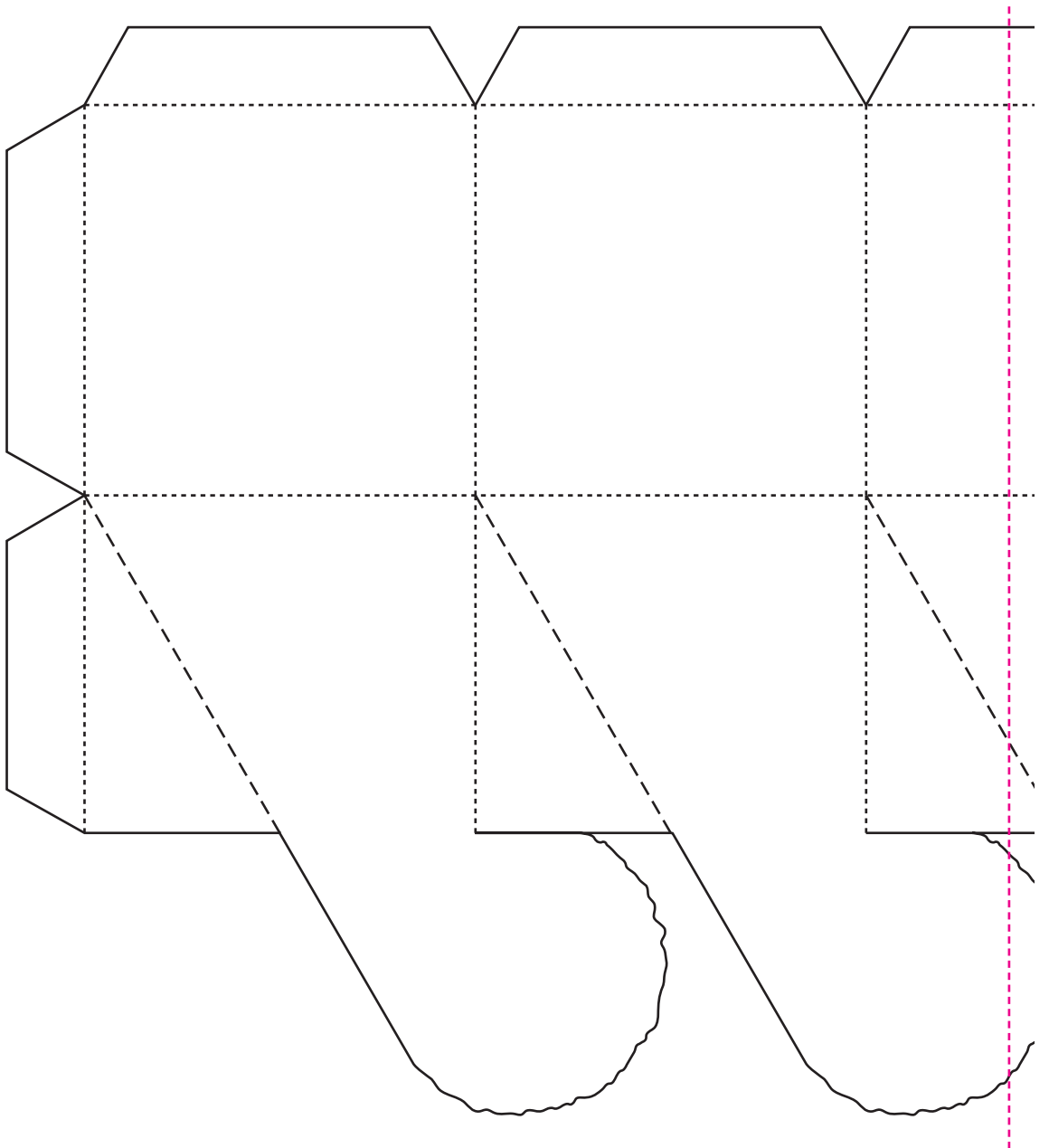


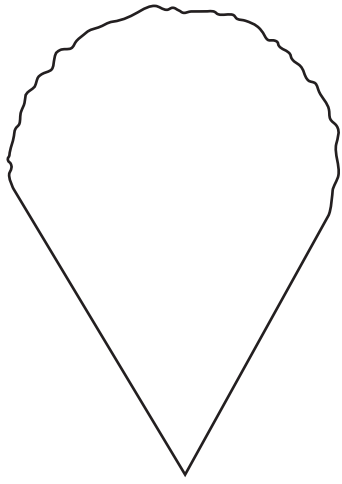
Square box (continued)



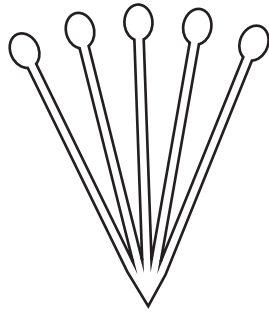
Hexagonal box

*Score and mountain fold along dotted lines;
score and valley fold along dashed lines*

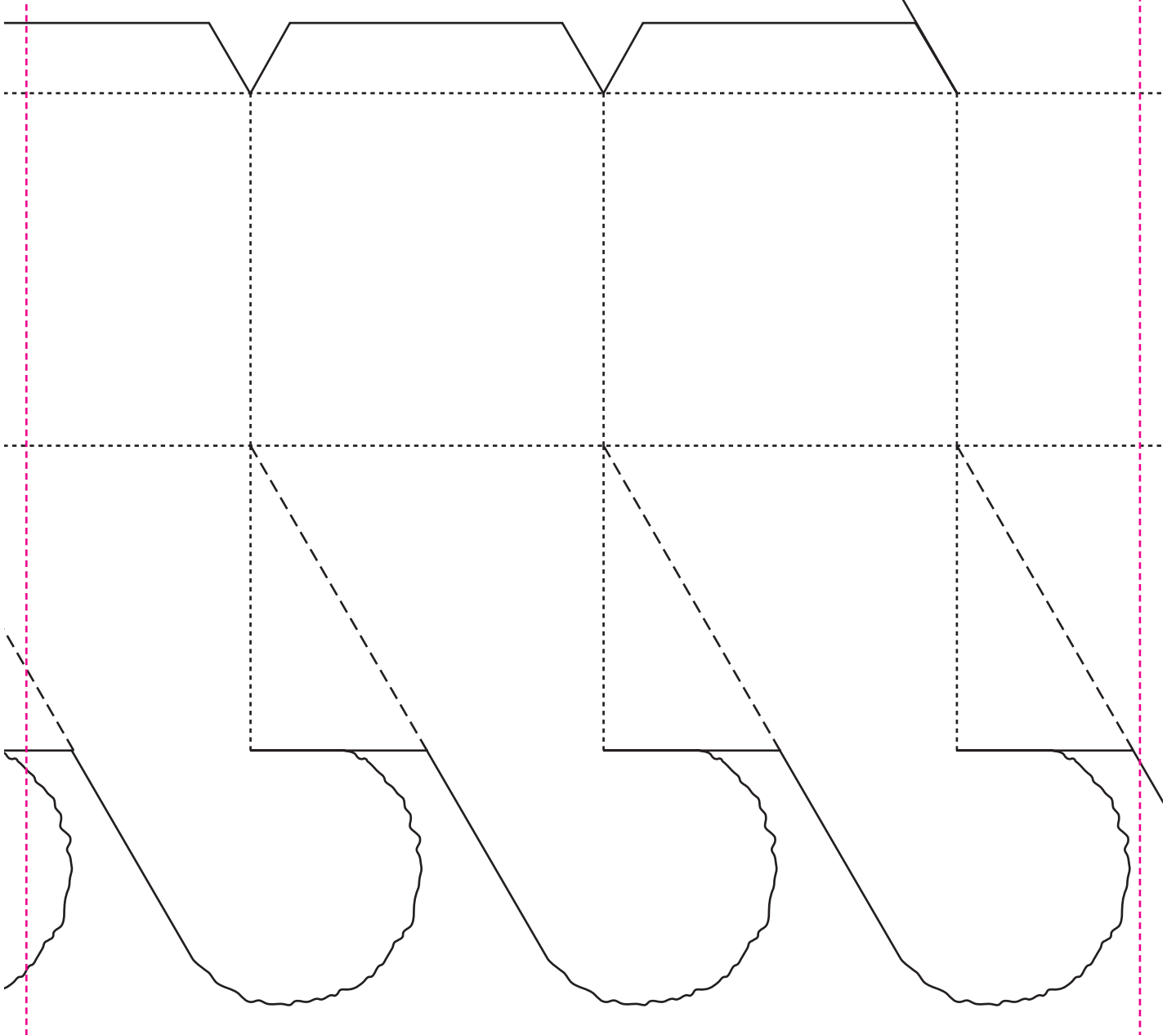
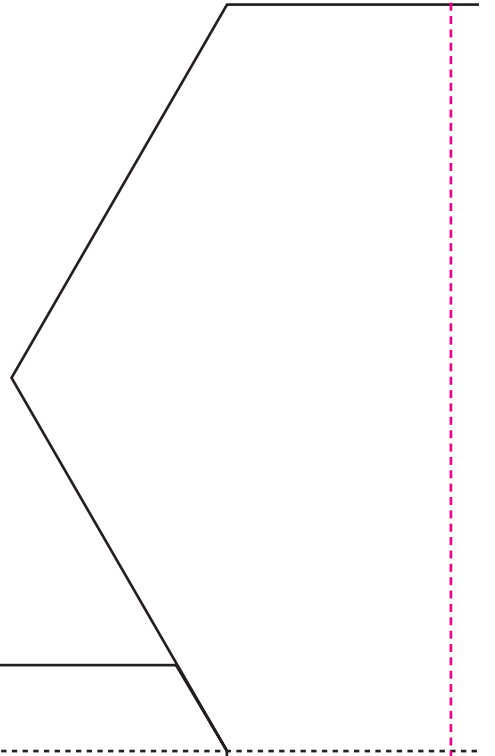




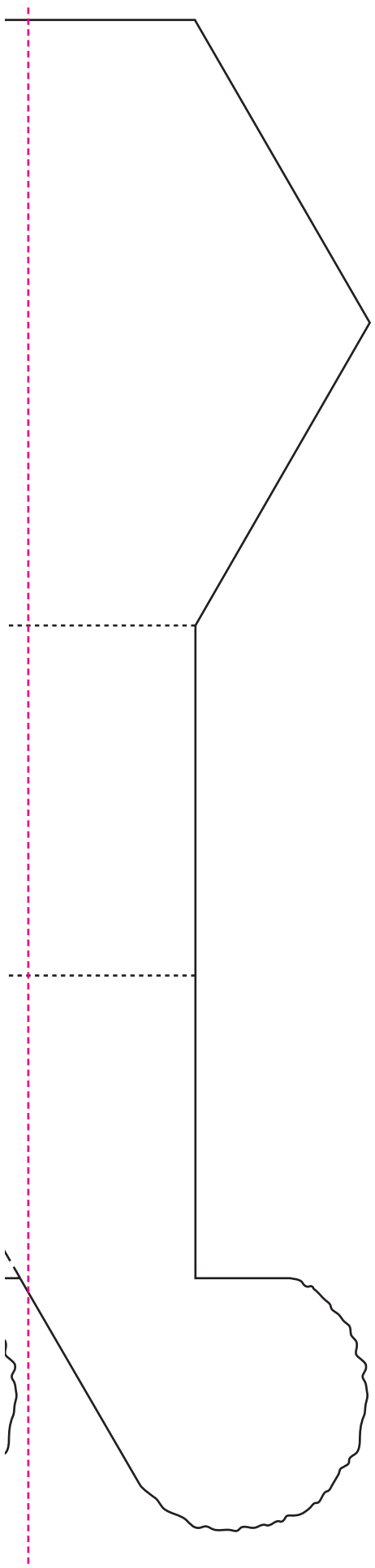
Petal
Cut 6 from medium mint paper



Stamen
Cut 6 from gold paper

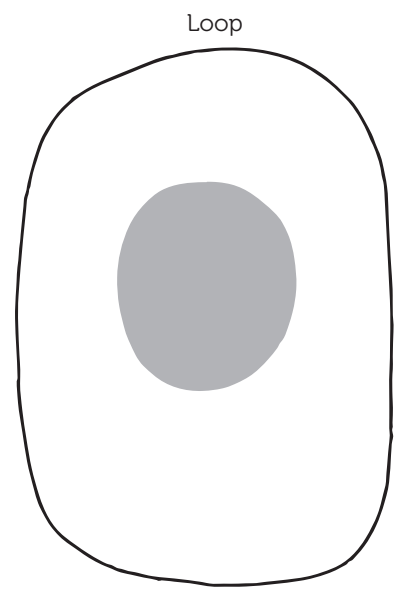


Hexagonal box (continued)



Hexagonal box (continued)

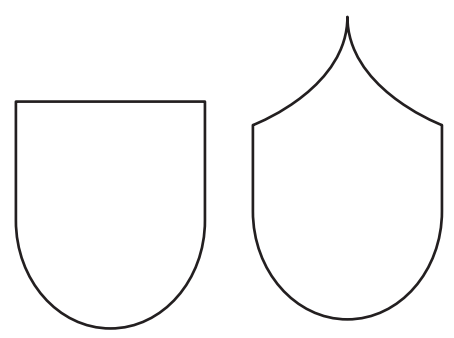
SEW PRETTY LOOP NECKLACE



Loop

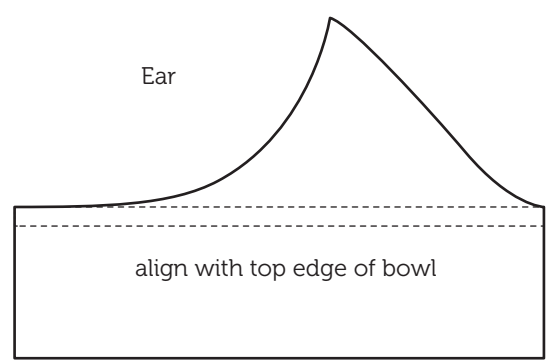
Cut out shaded area

WISE OWL BOWLS



Feather 1

Feather 2

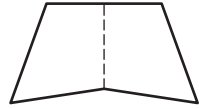
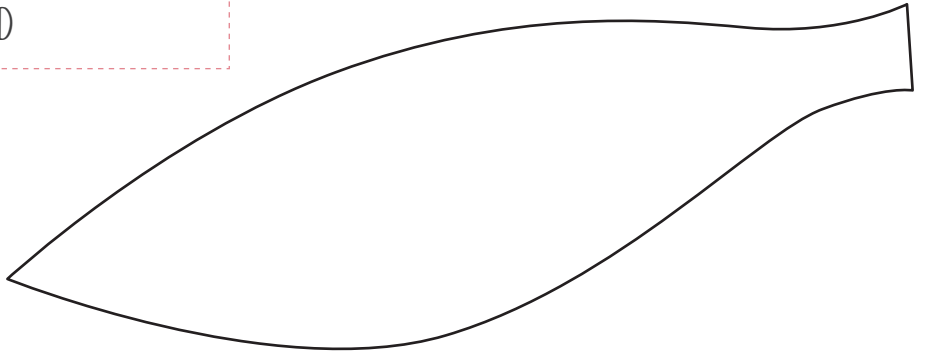
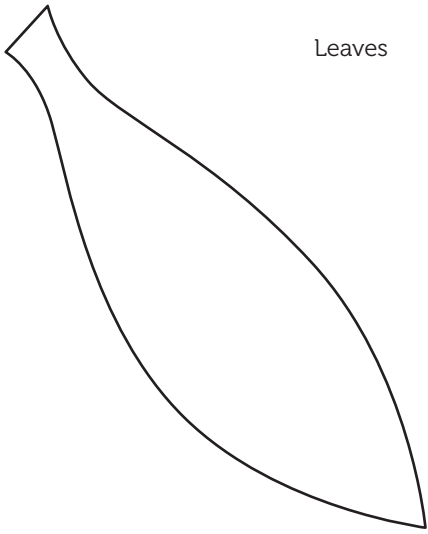


Ear

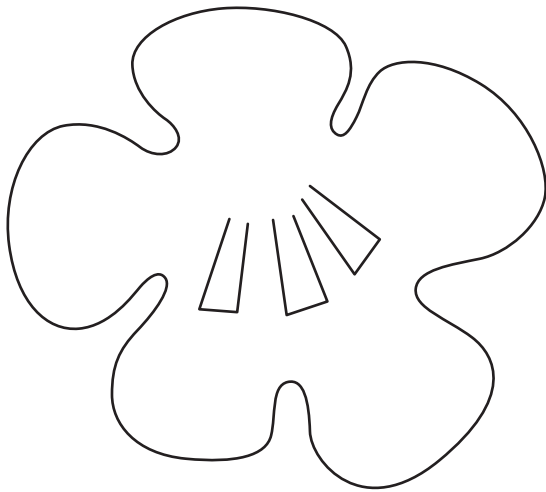
align with top edge of bowl

AUTUMN GARLAND

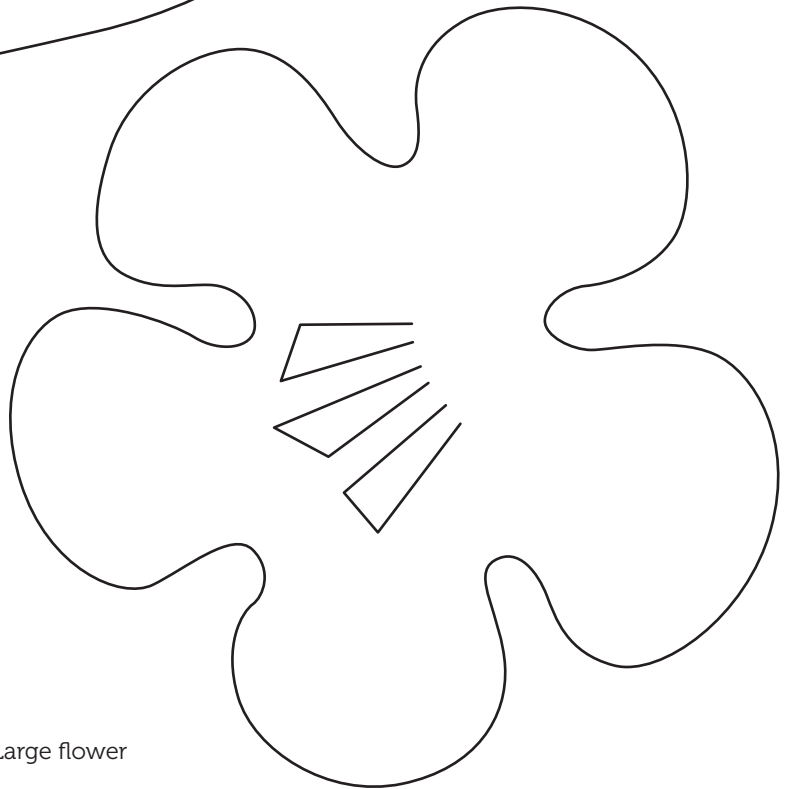
Leaves



Pumpkin stalk



Small flower



Large flower

PAPIER MÂCHÉ CLOUD SHELF

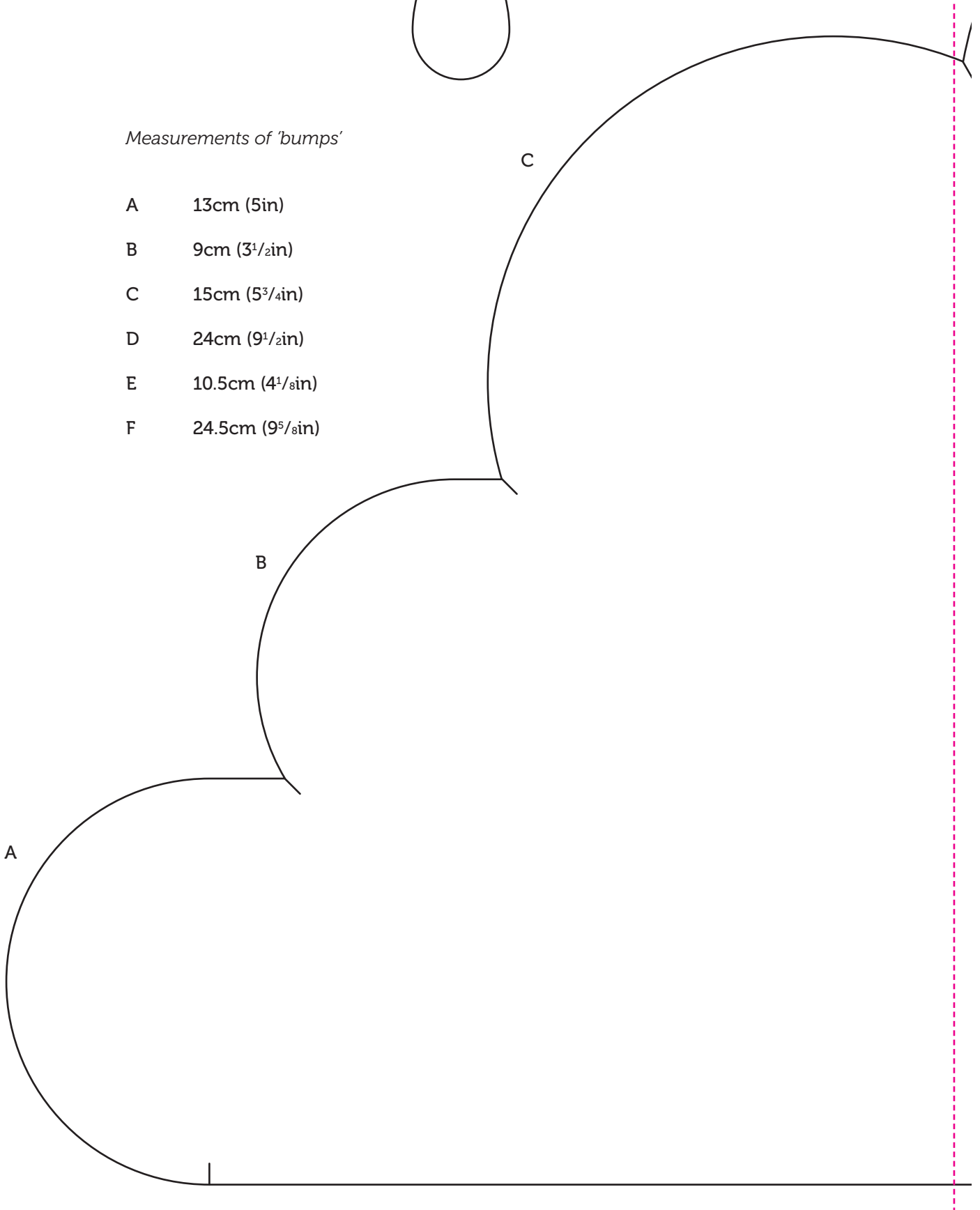
Raindrop



Cloud

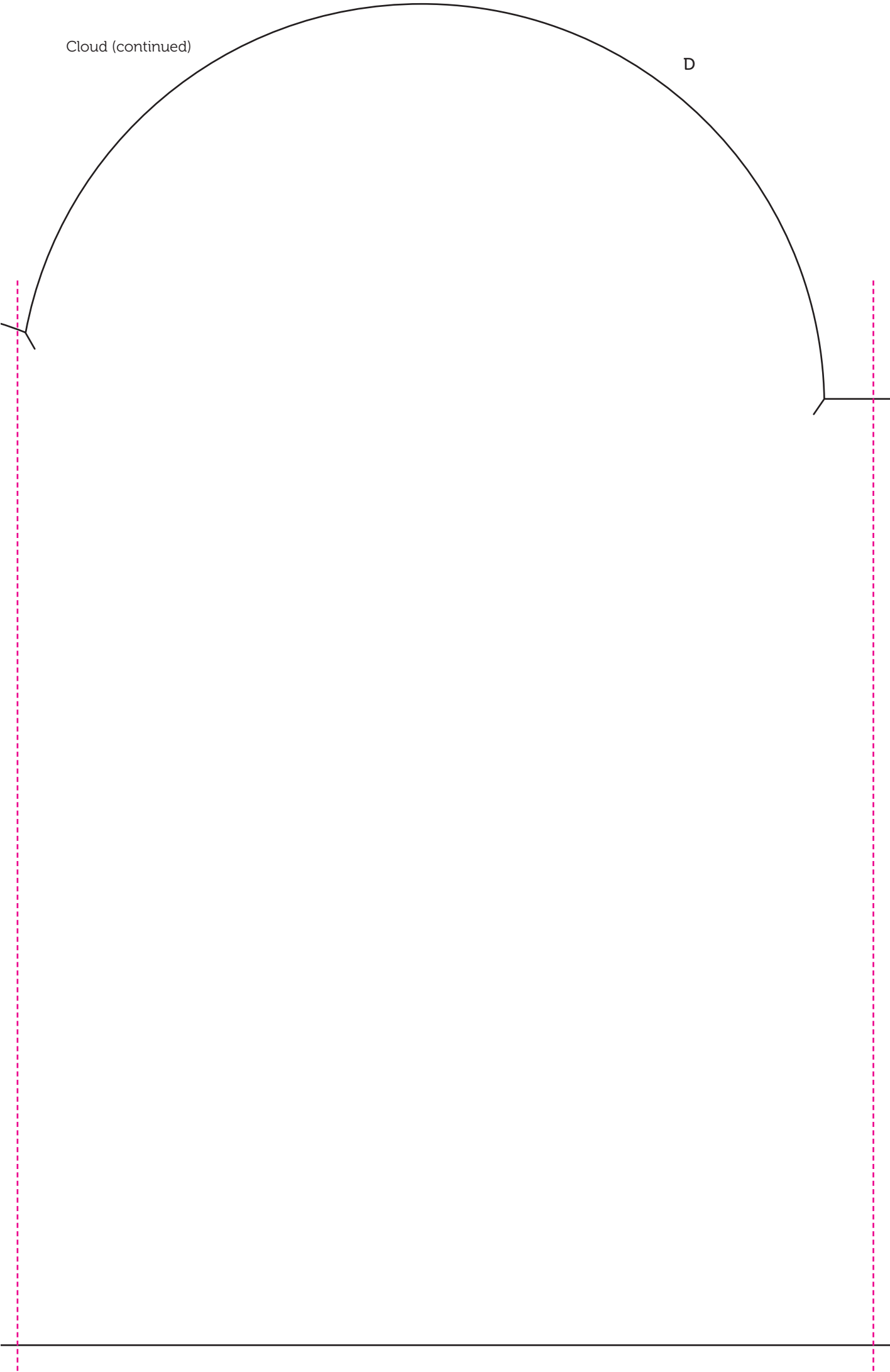
Measurements of 'bumps'

- A 13cm (5in)
- B 9cm (3¹/₂in)
- C 15cm (5³/₄in)
- D 24cm (9¹/₂in)
- E 10.5cm (4¹/₈in)
- F 24.5cm (9⁵/₈in)

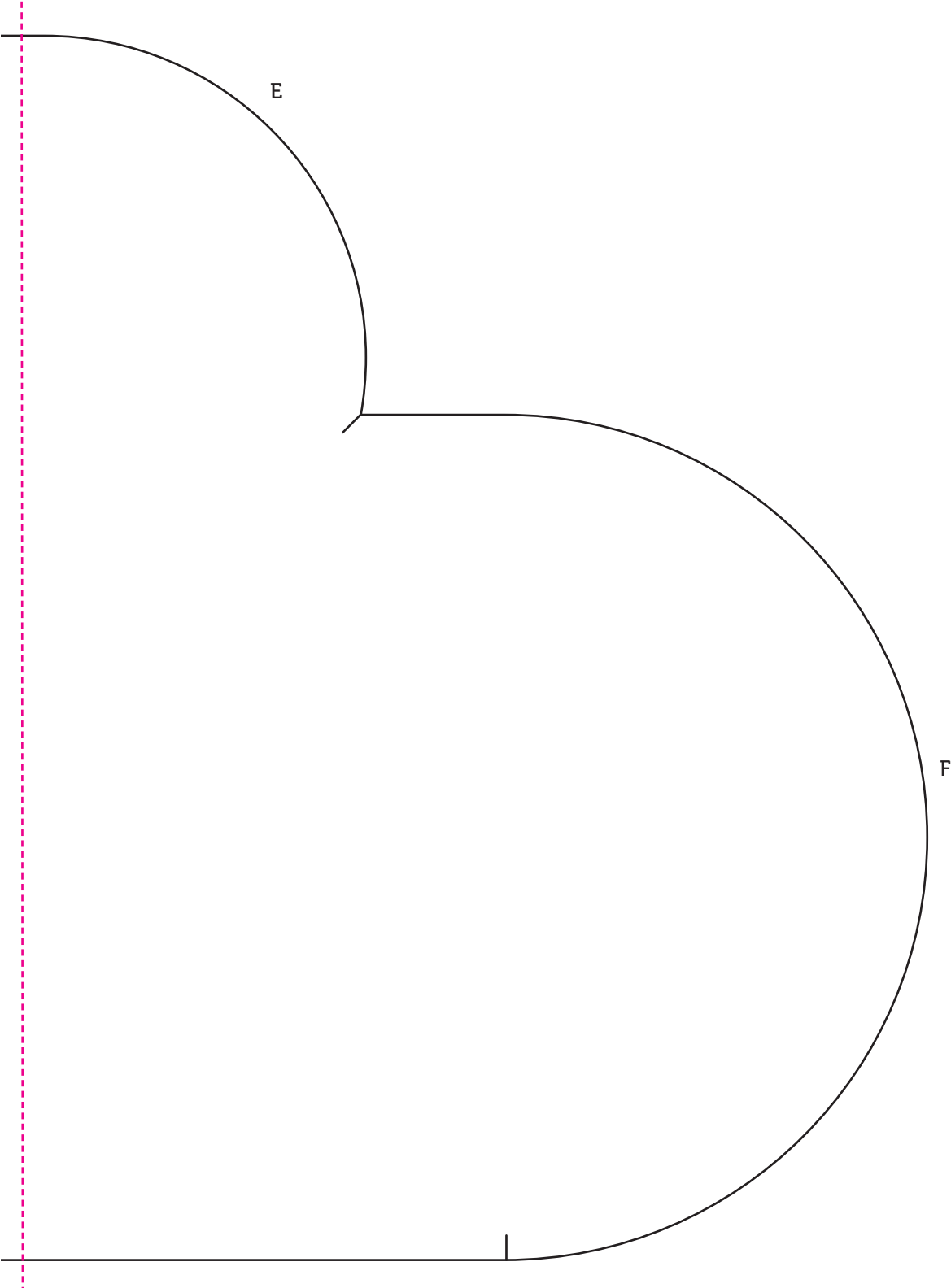


Cloud (continued)

D

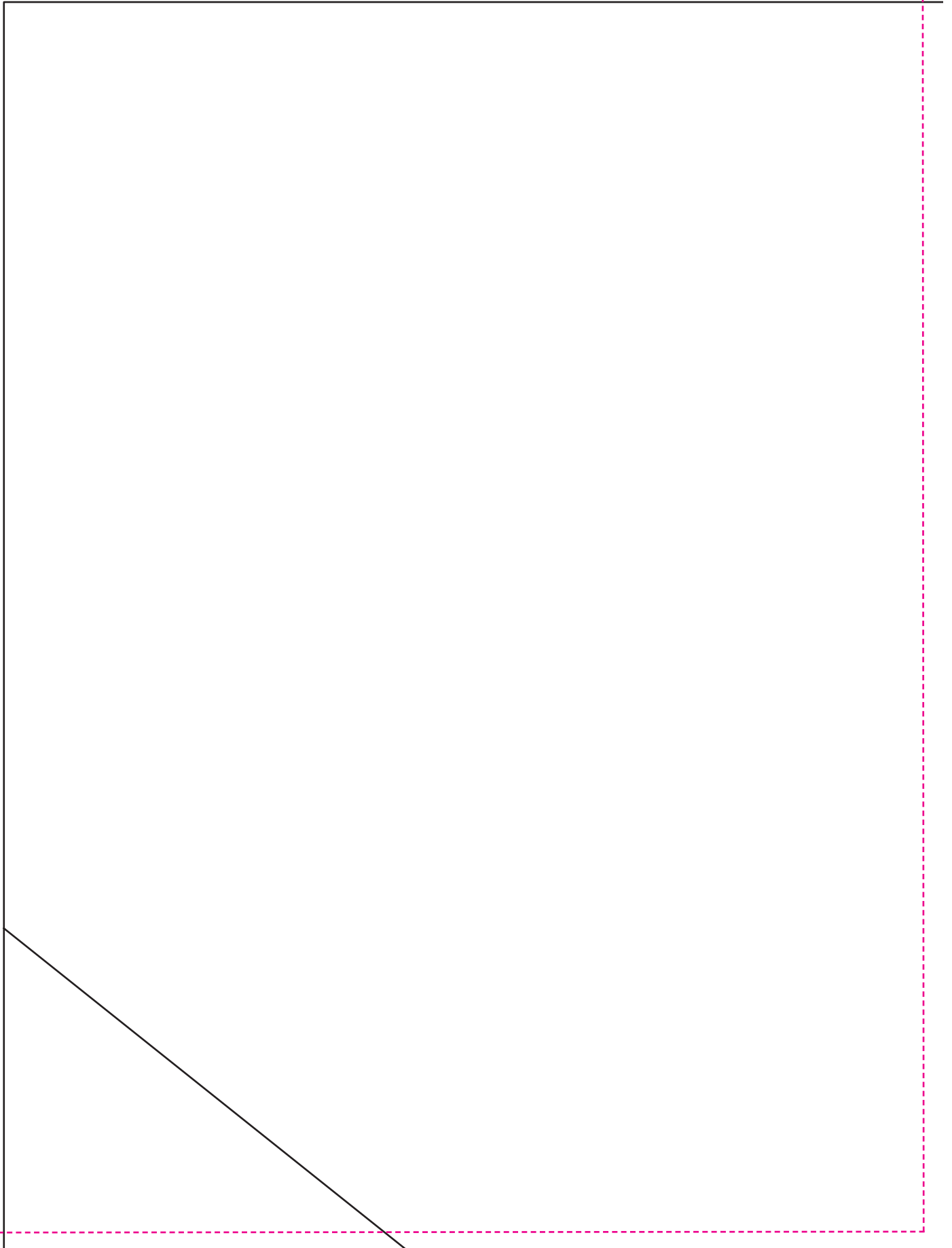


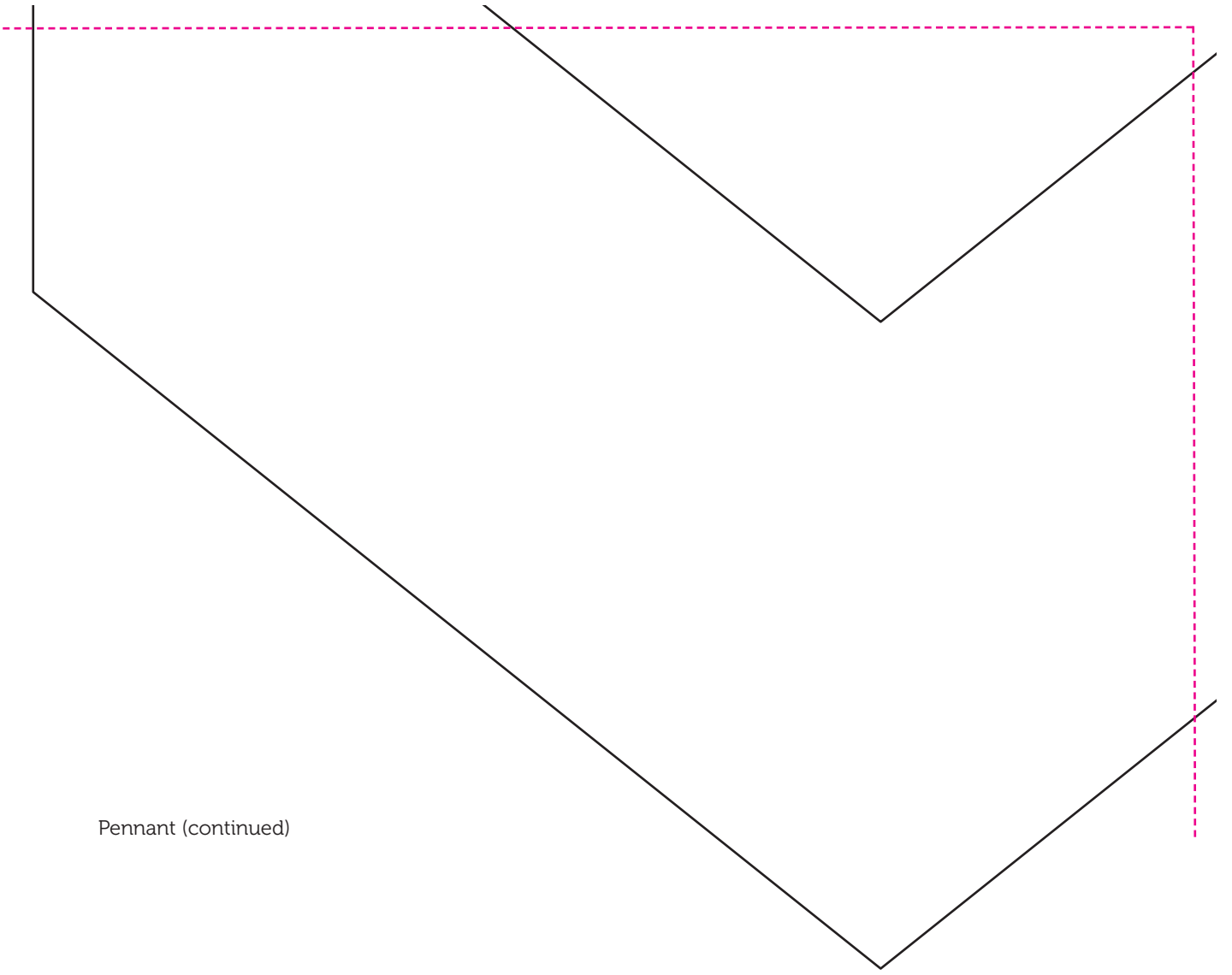
Cloud (continued)



CAPITAL LETTER PENNANT

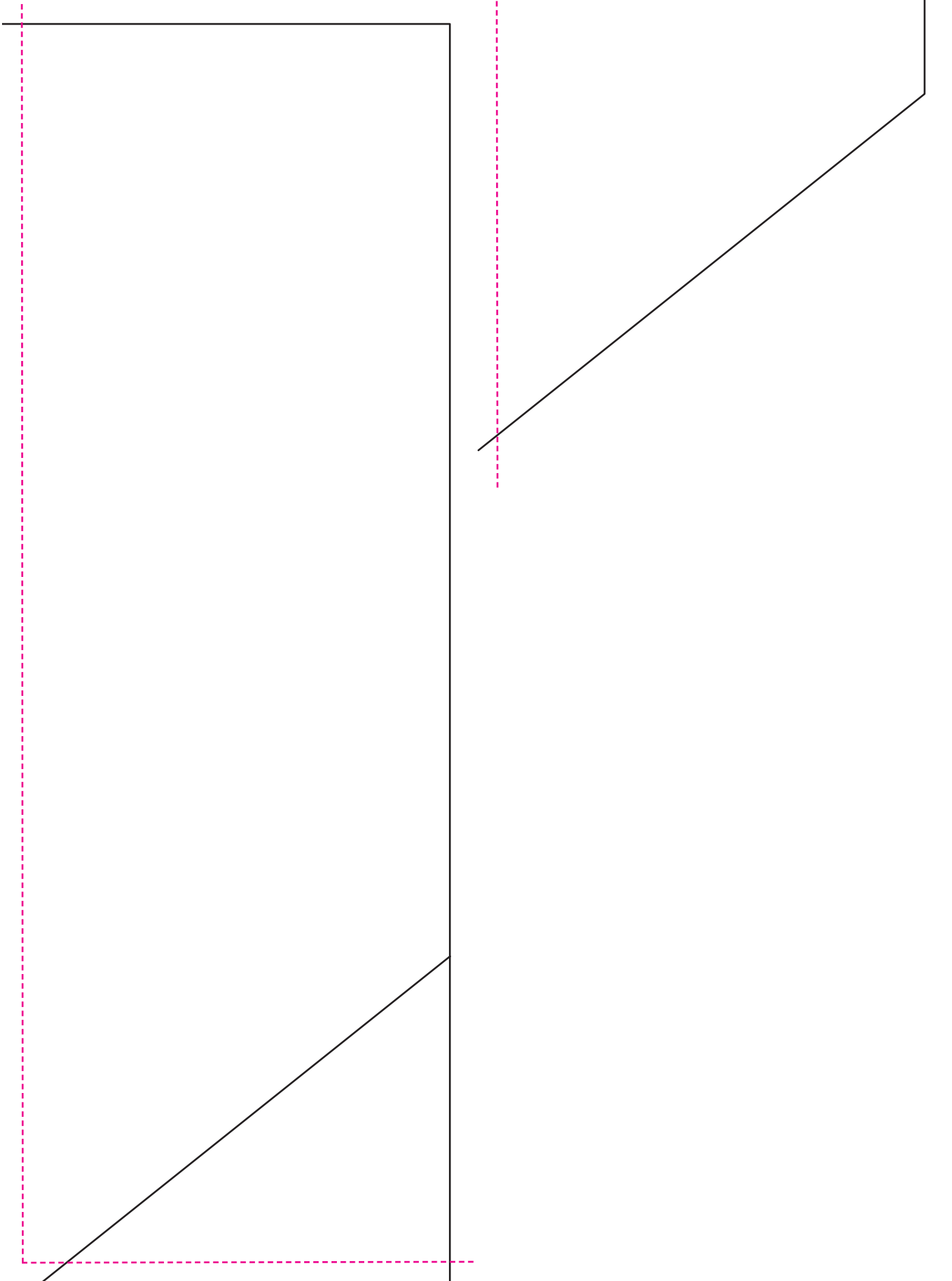
Pennant



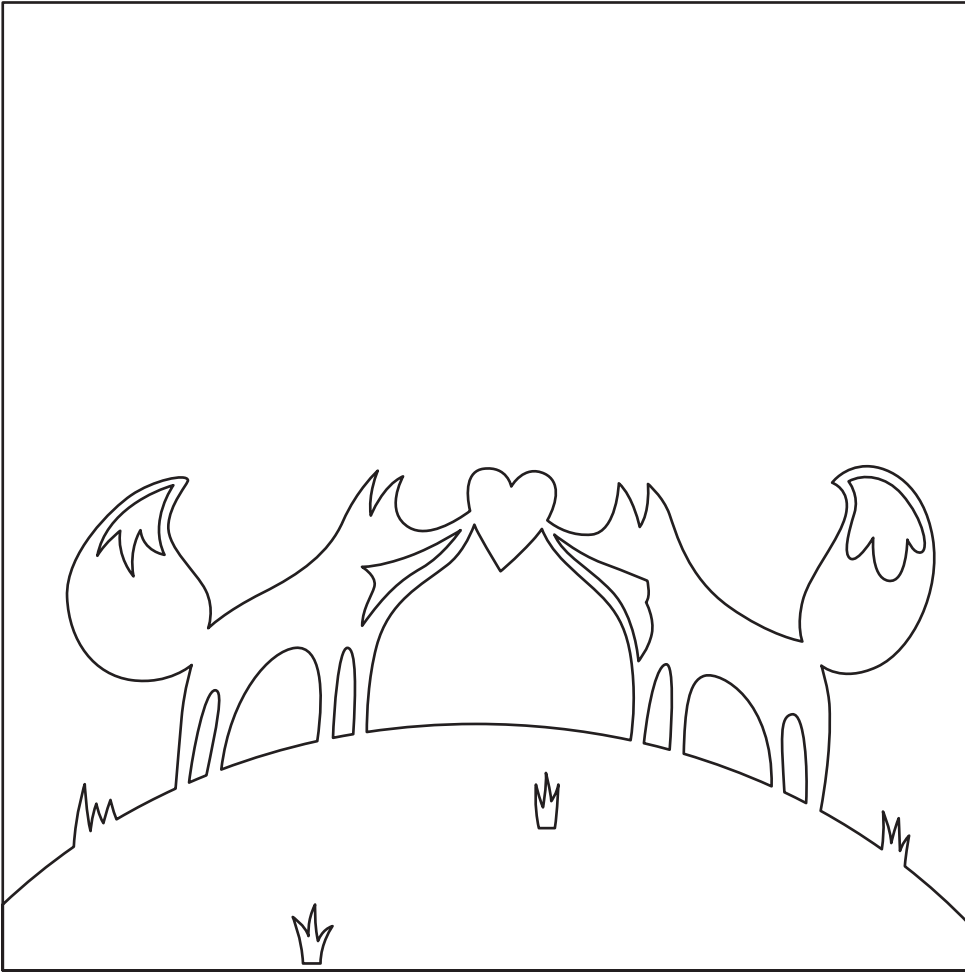


Pennant (continued)

Pennant (continued)

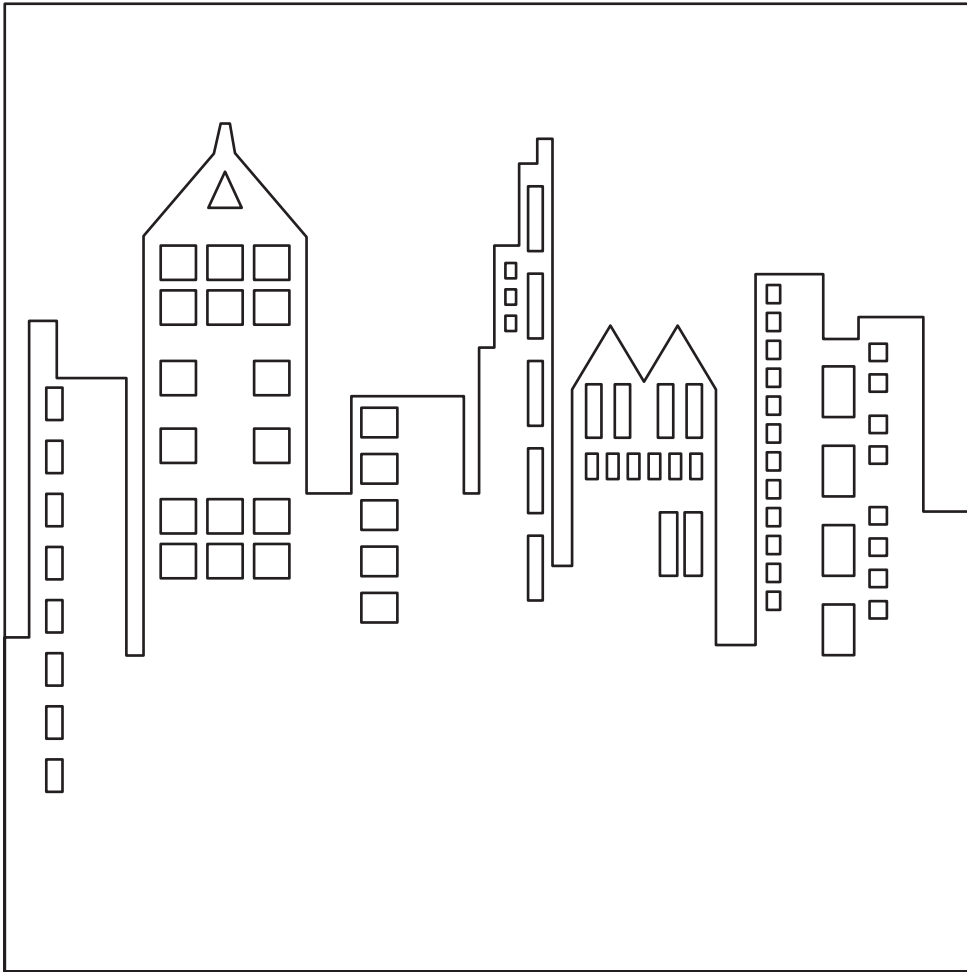


FOXY NIGHTS PAPER CUT



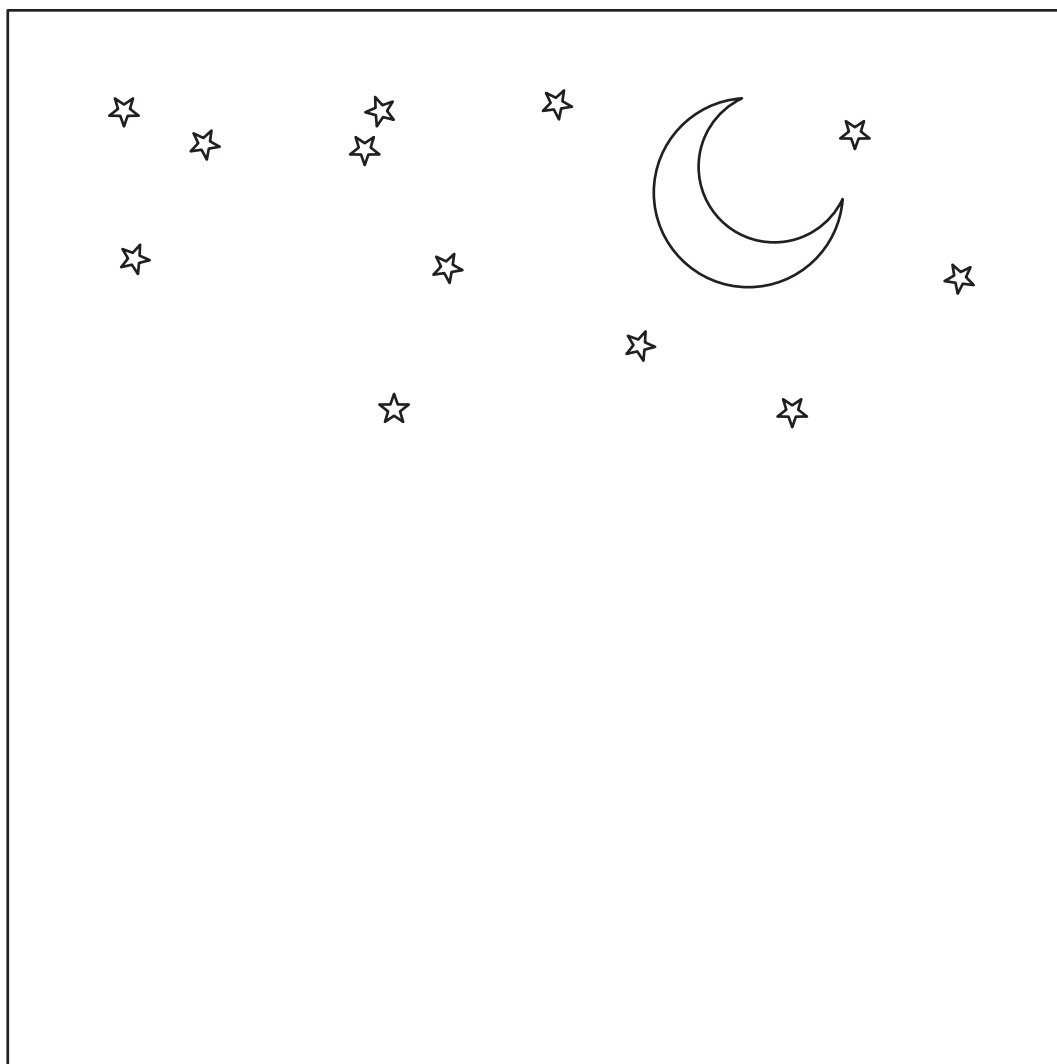
Kissing foxes

FOXY NIGHTS PAPER CUT



City skyline

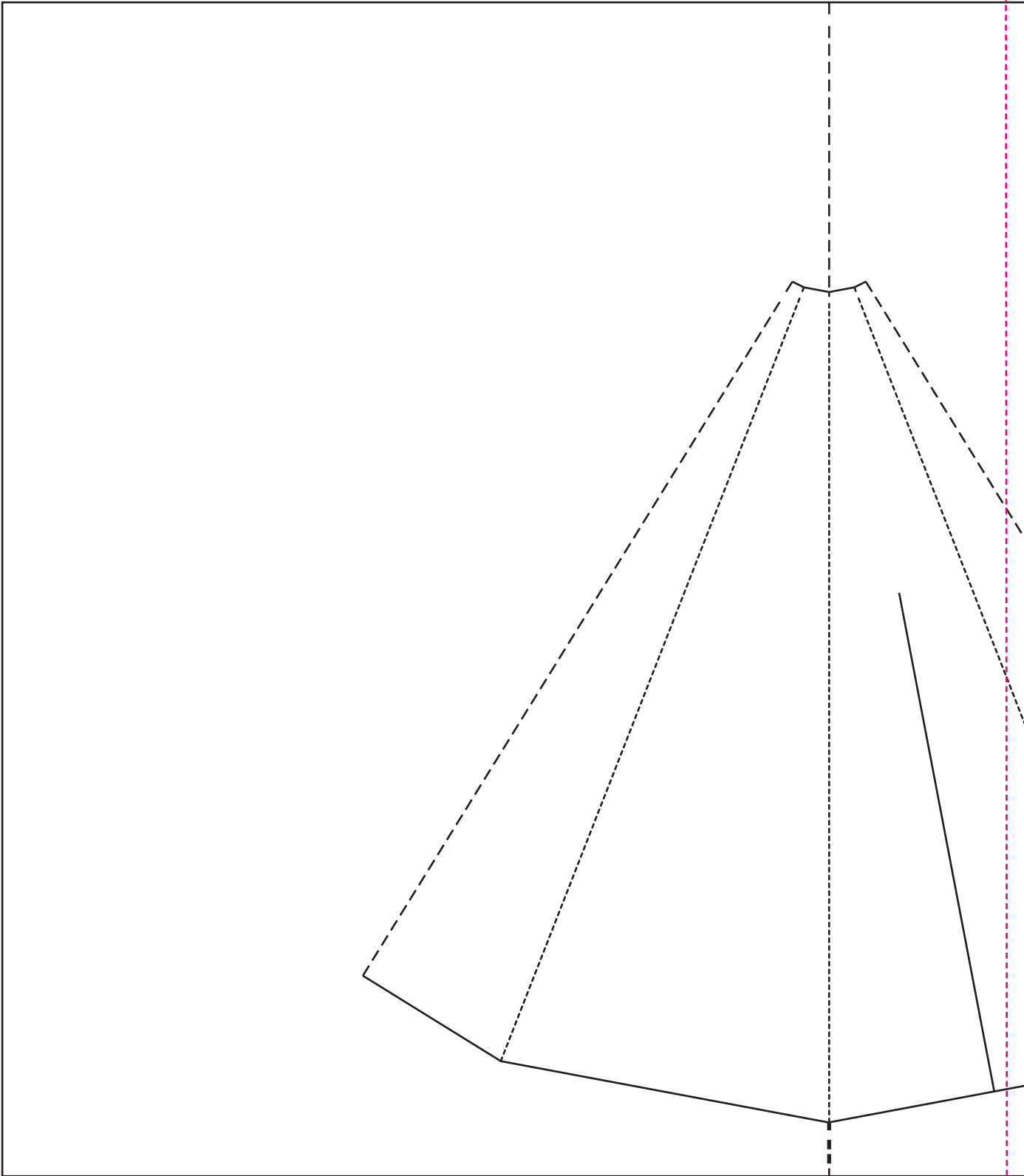
FOXY NIGHTS PAPER CUT



Night sky

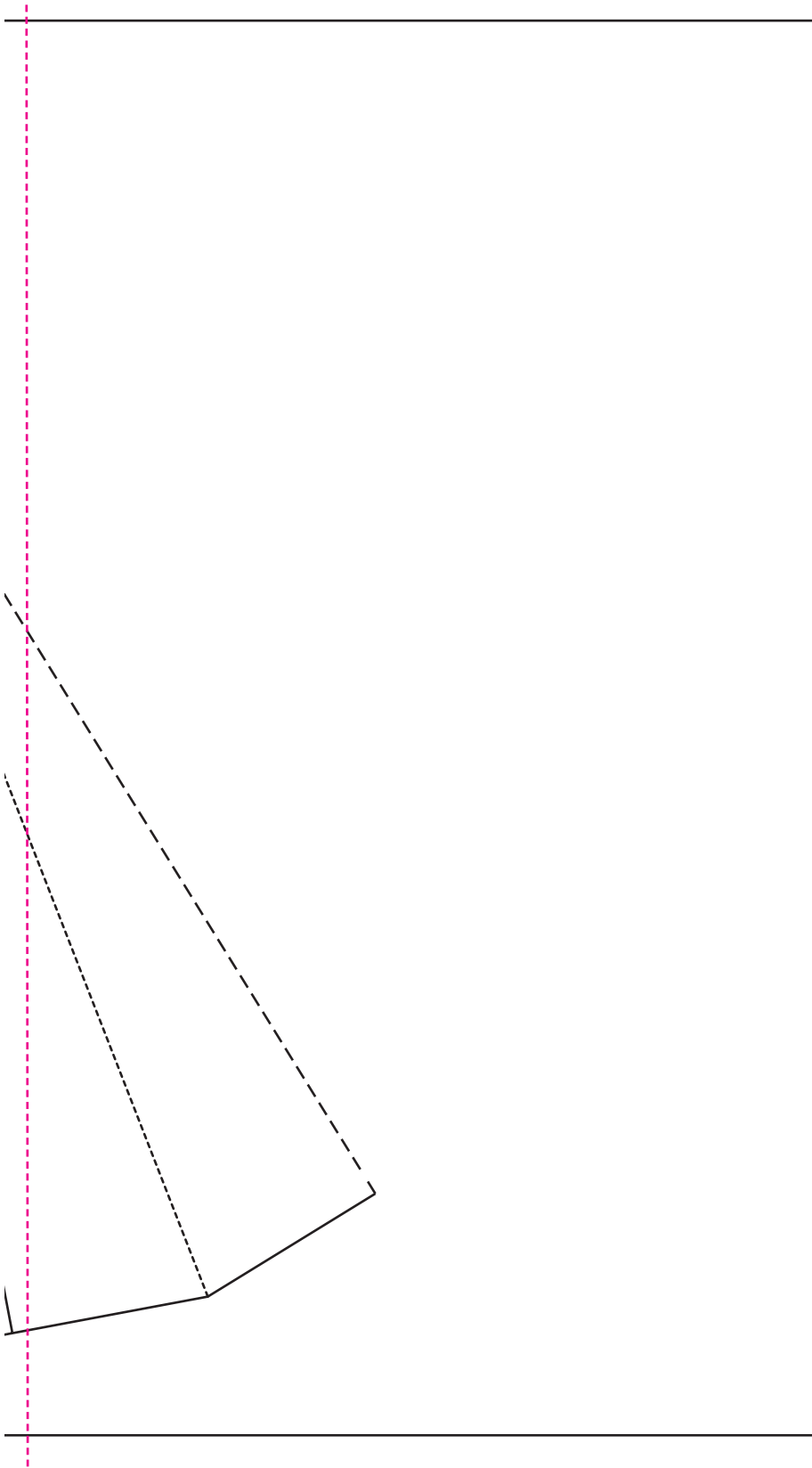
POP-UP TEEPEE CARD

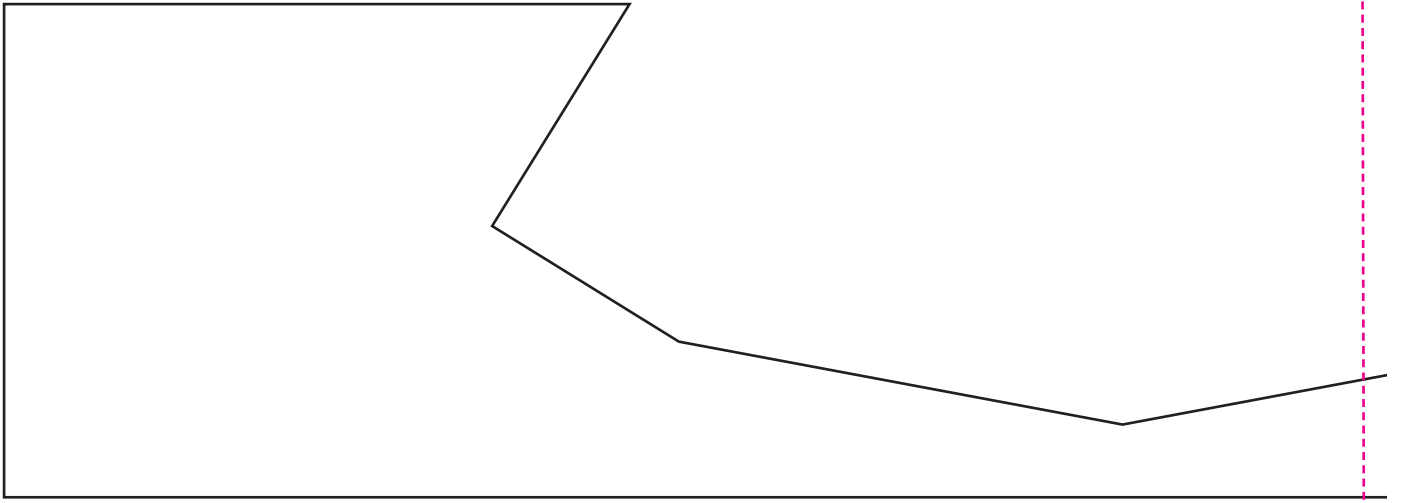
Teepee



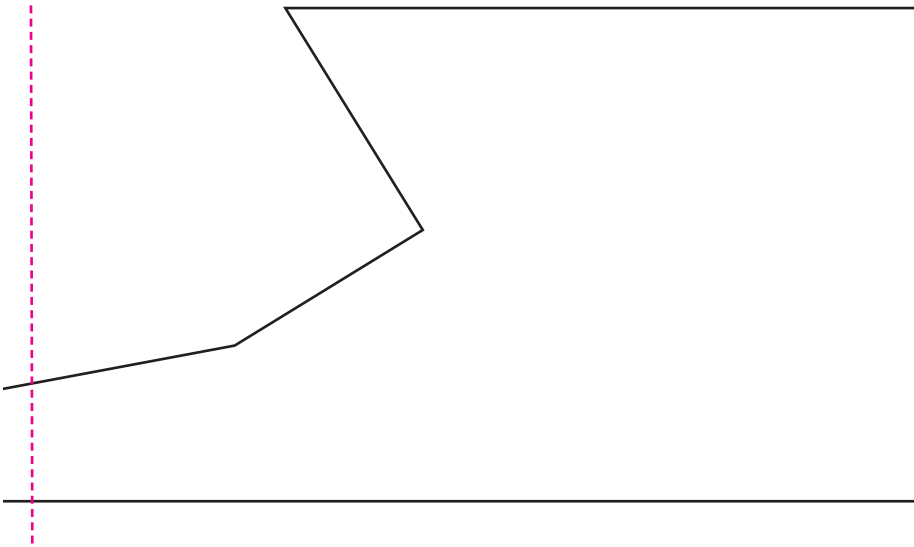
Score and mountain fold along dotted lines; score and valley fold along dashed lines

Teepee (continued)





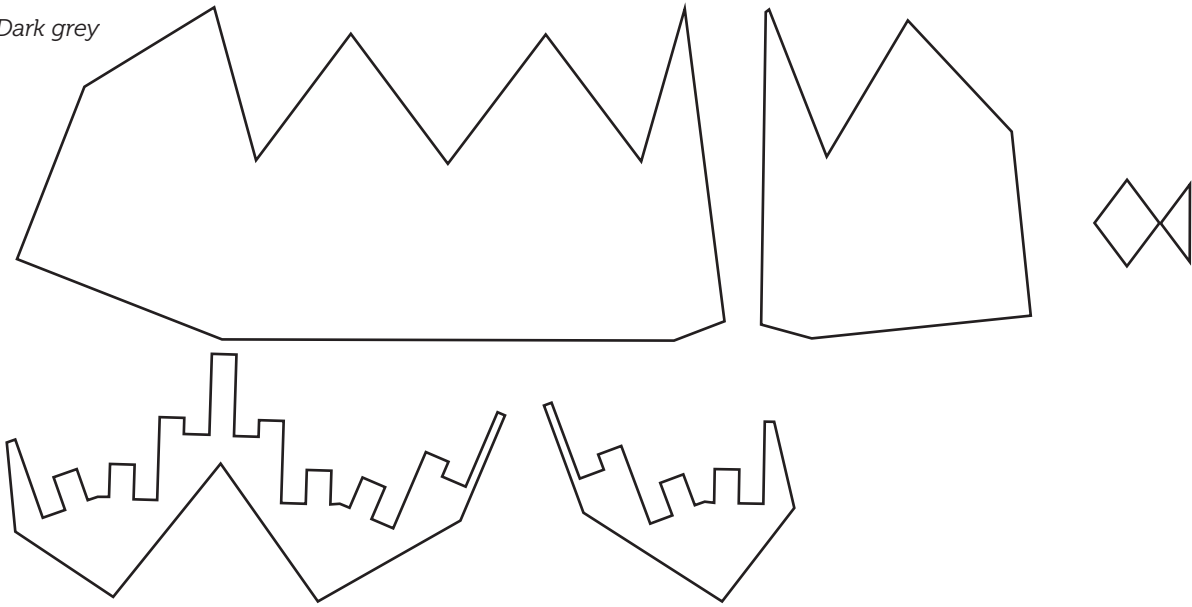
Teepee base



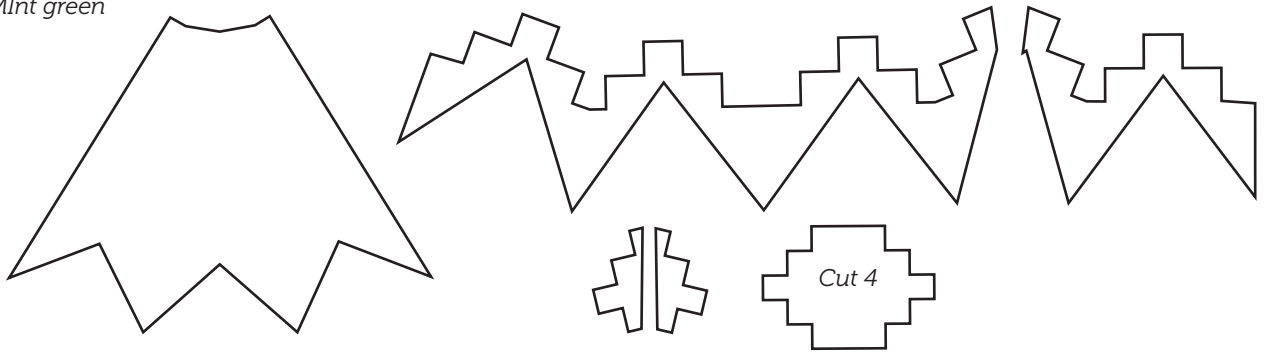
Teepee decoration

Cut 1 of each unless otherwise specified.

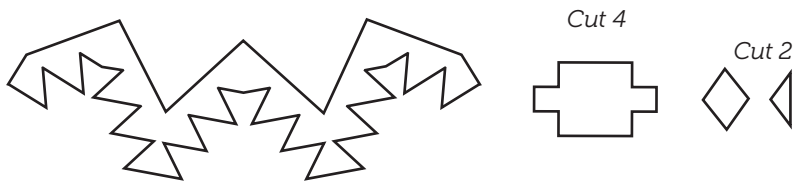
Dark grey



Mint green



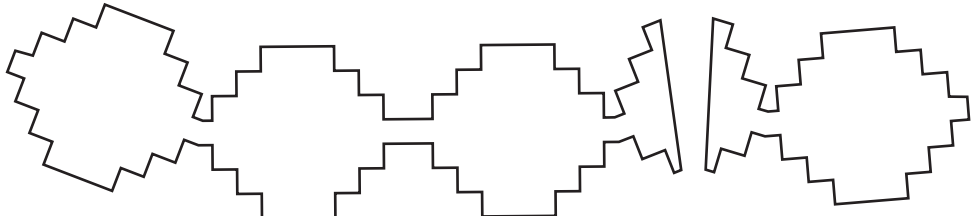
Pink



Yellow



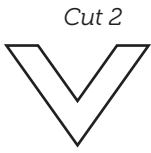
Teal



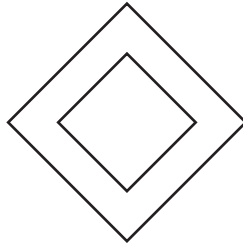
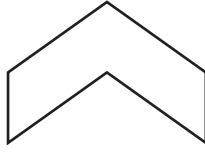
Front of card decoration

Cut 1 of each unless otherwise specified.

Pink

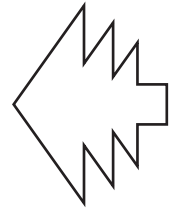


Cut 2



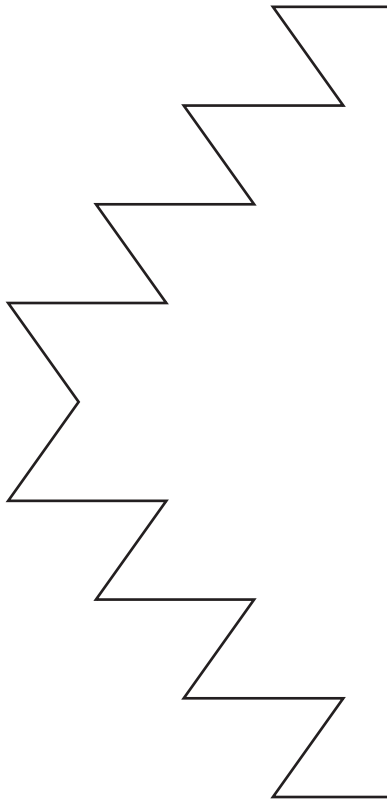
Teal

Cut 2



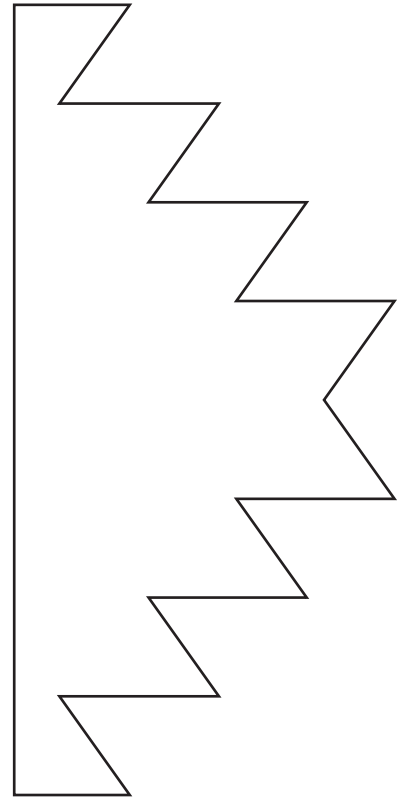
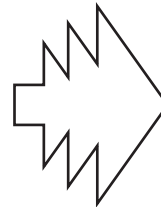
Dark grey

Cut 2



MInt green

Cut 2



Yellow

Cut 2



Cut 2

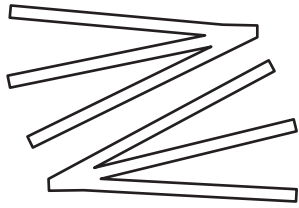
Pale mint

Cut 2

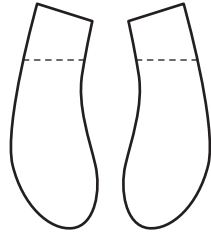


FOREST FRIENDS SHELF ORNAMENTS

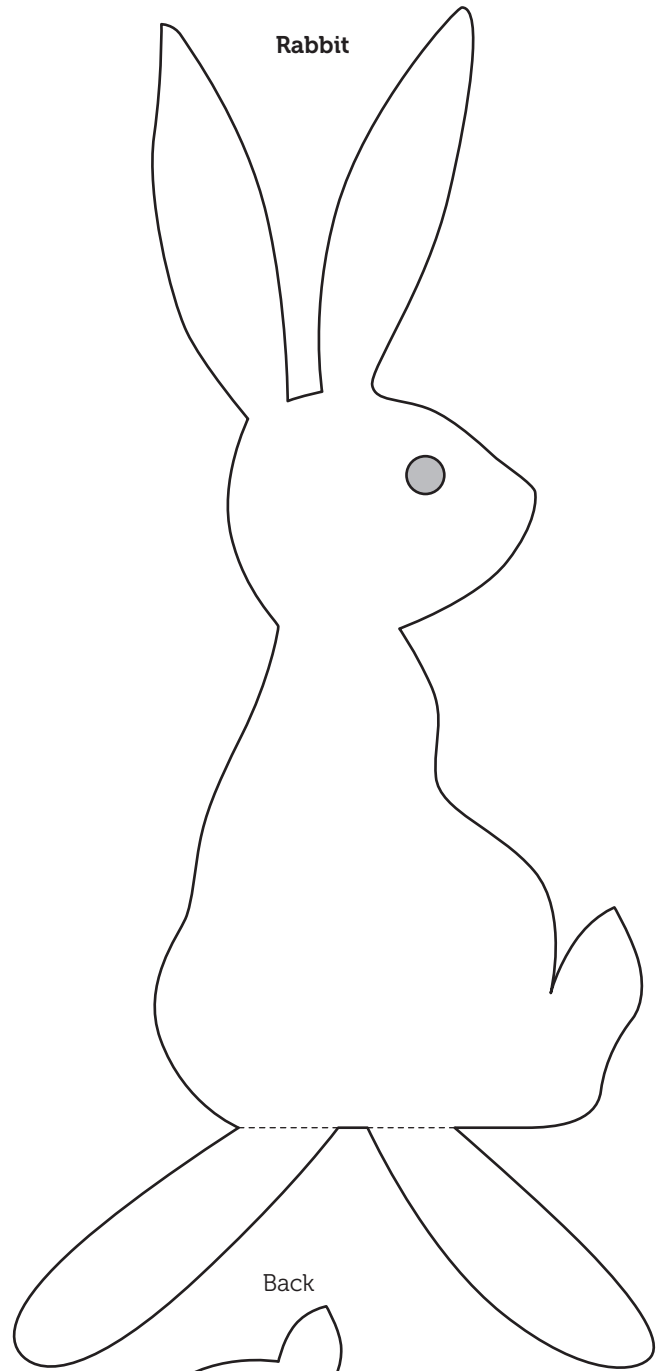
Whiskers



Arms

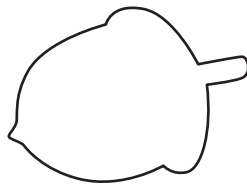


Rabbit

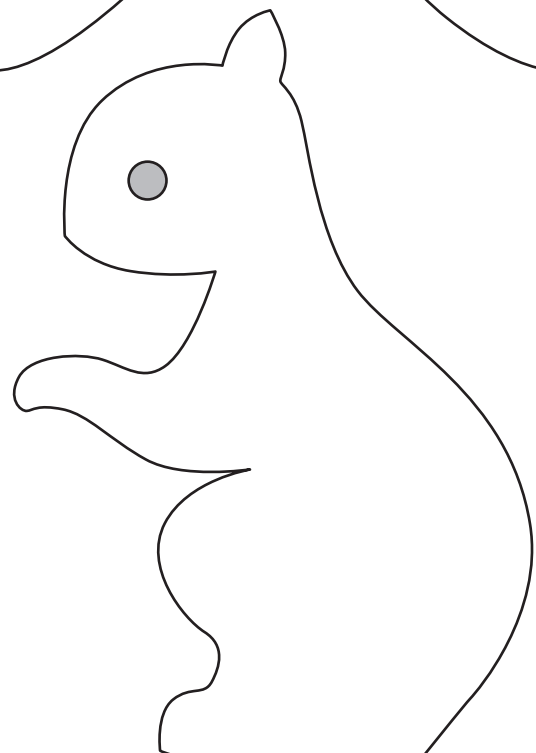
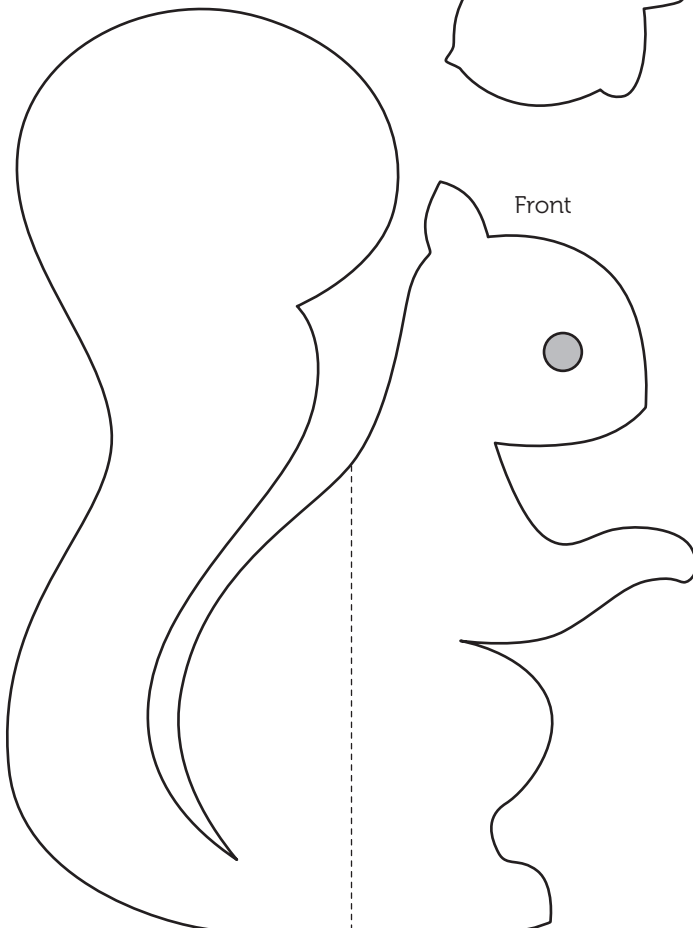


Back

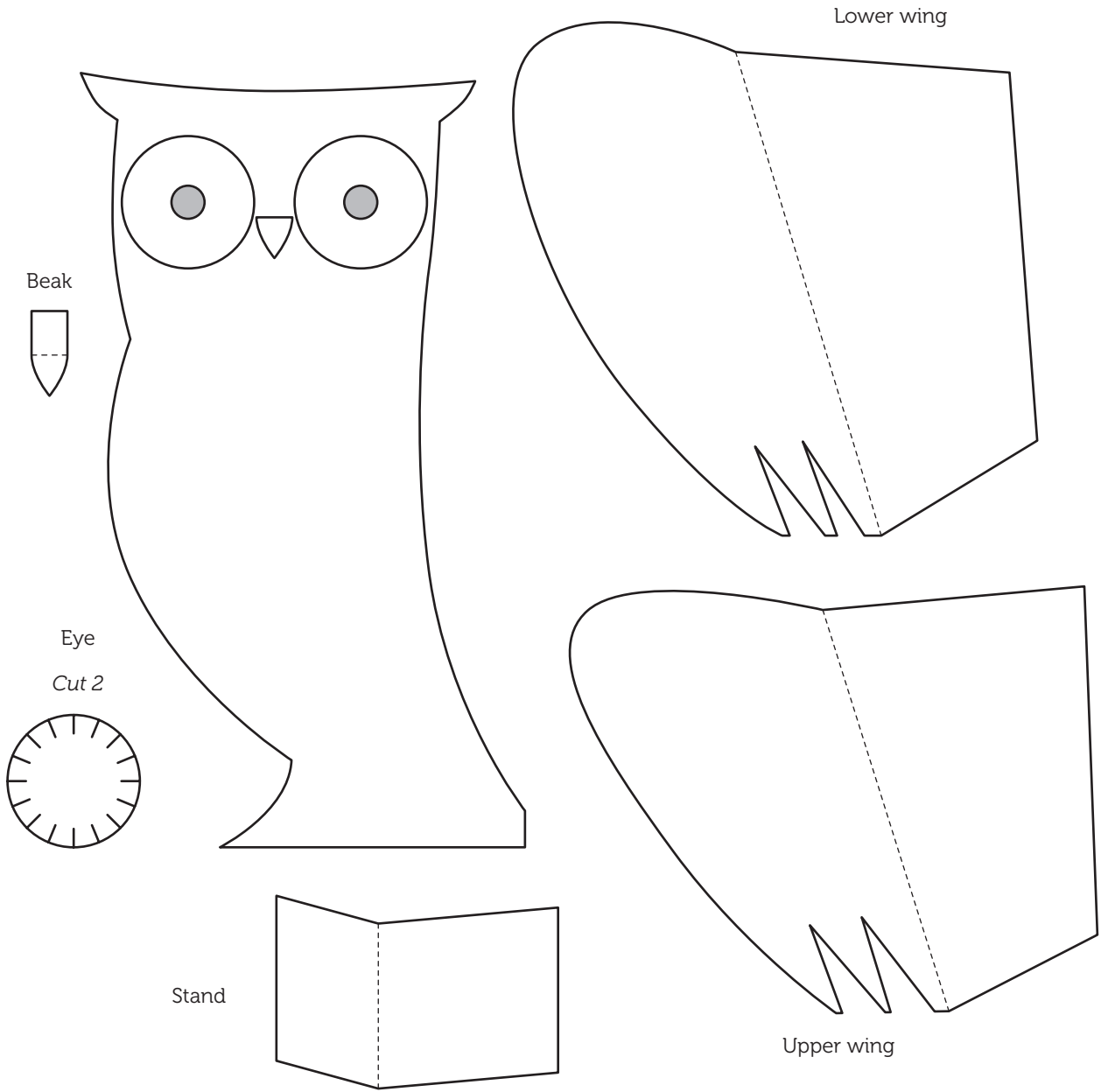
Squirrel



Front



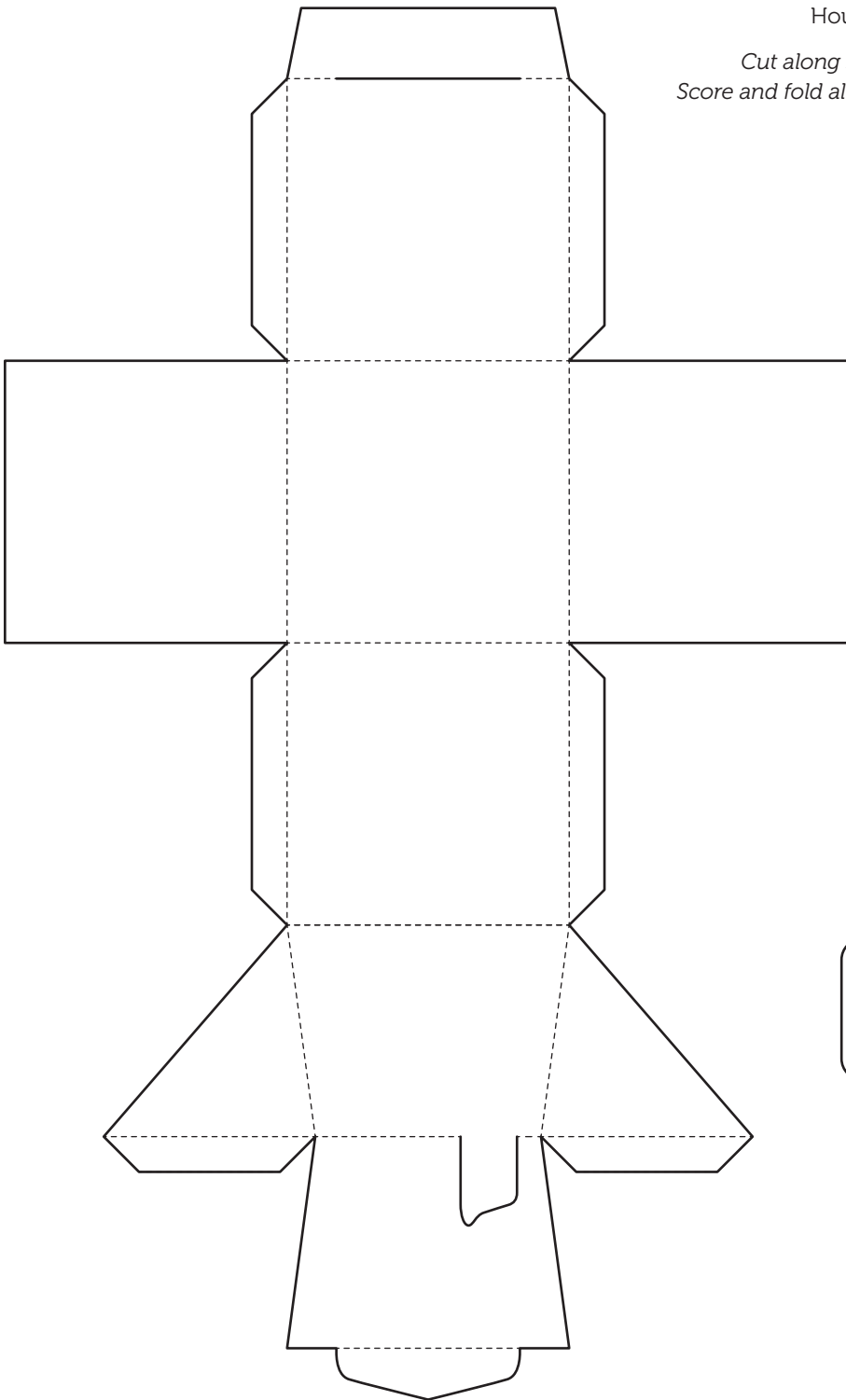
Owl



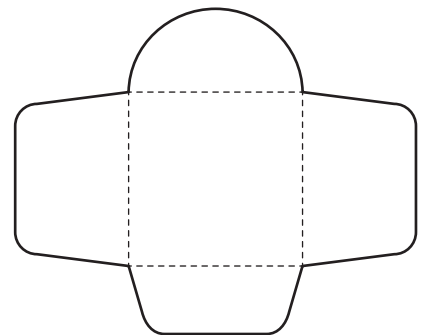
TEENY-WEENY PULL-OUT HOUSE

House

*Cut along solid lines
Score and fold along dotted lines*



Mini Envelope



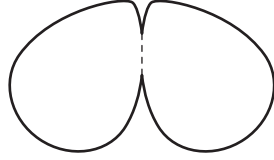
MINI PARTY PIÑATA

Seed



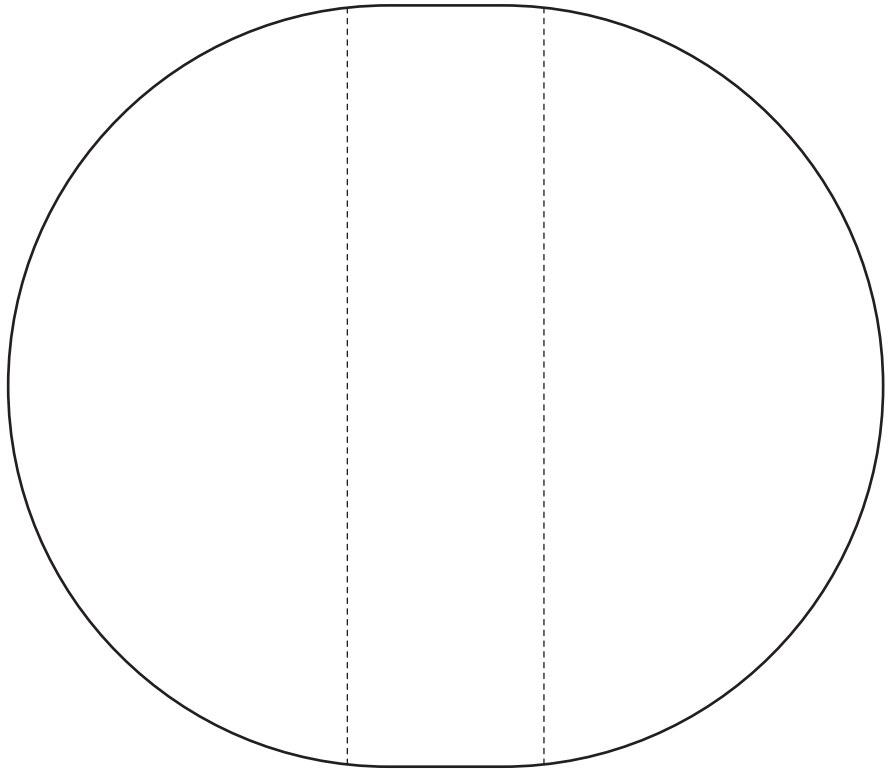
Cut 10

Pull tab

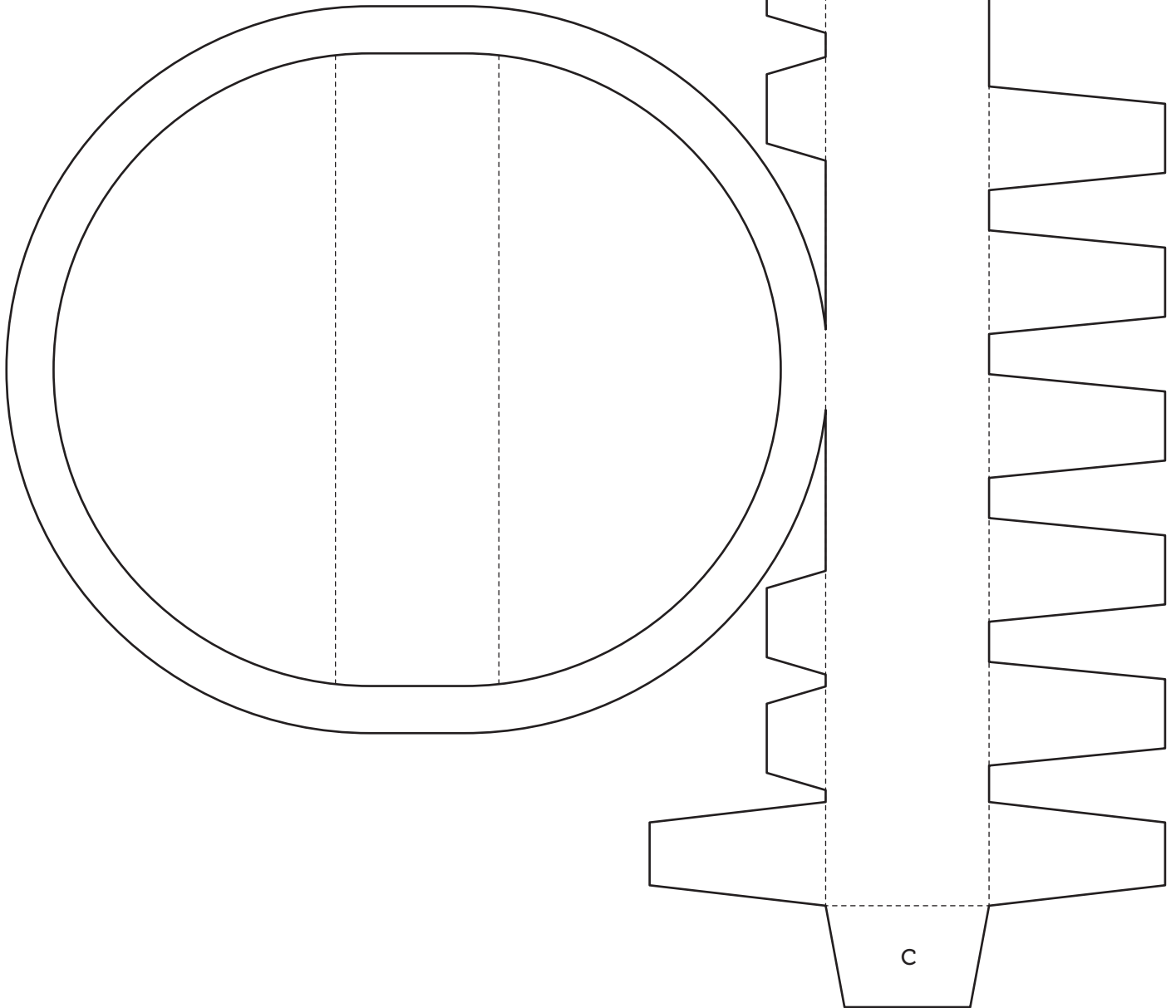


Score along dashed lines

Template A
Score along dashed lines

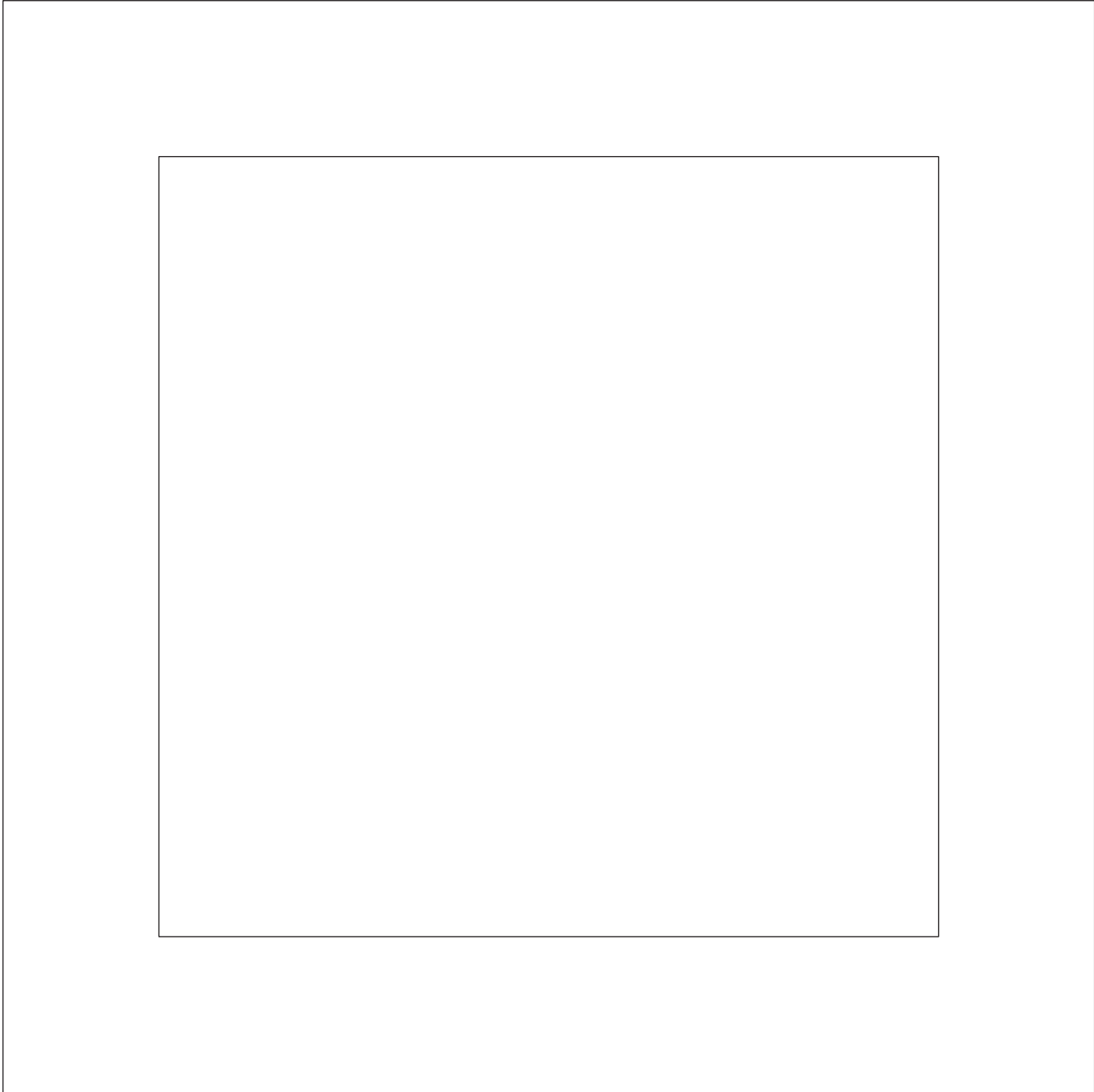


Template B
Score along dashed lines



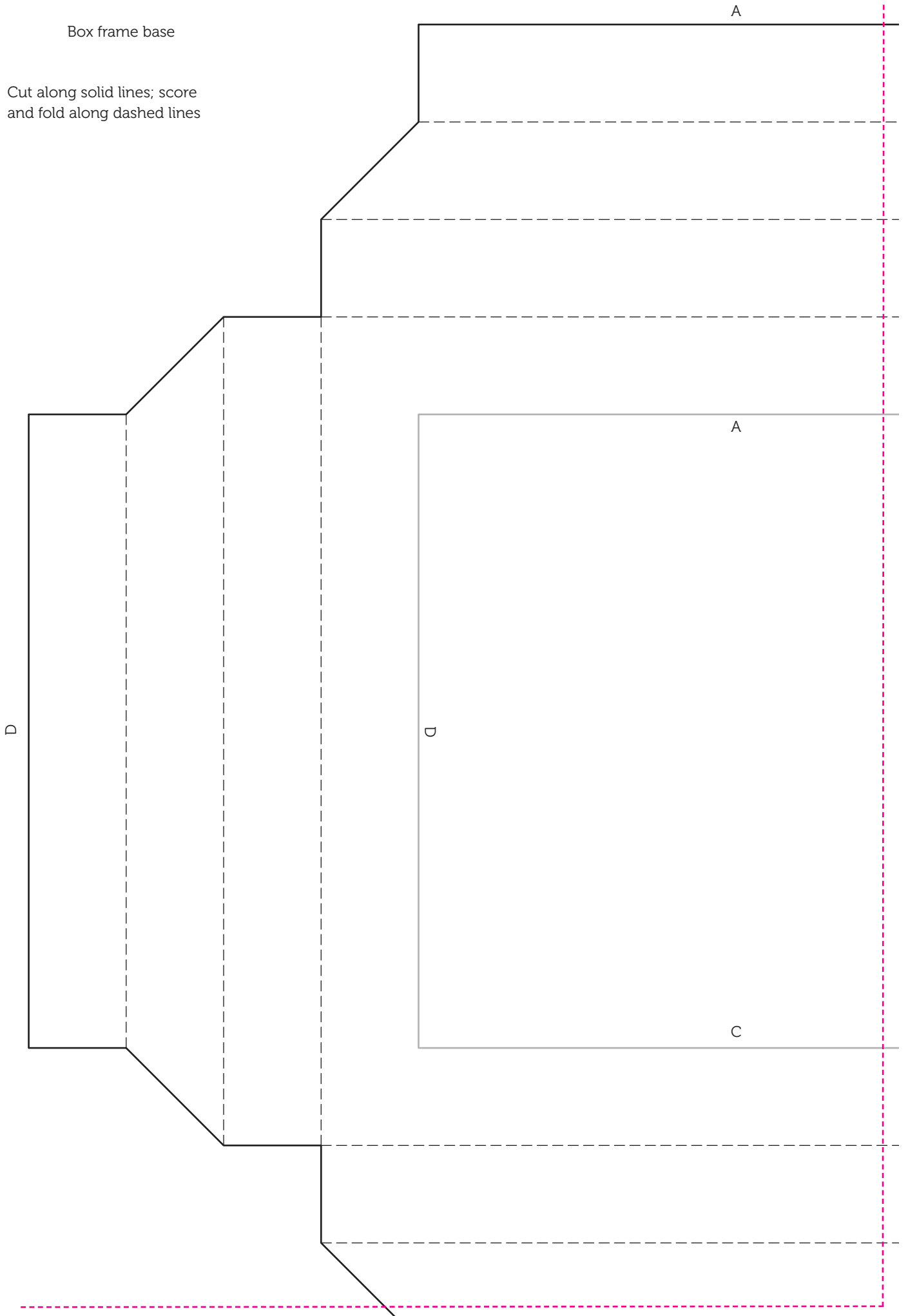
QUILLING SHADOW BOX

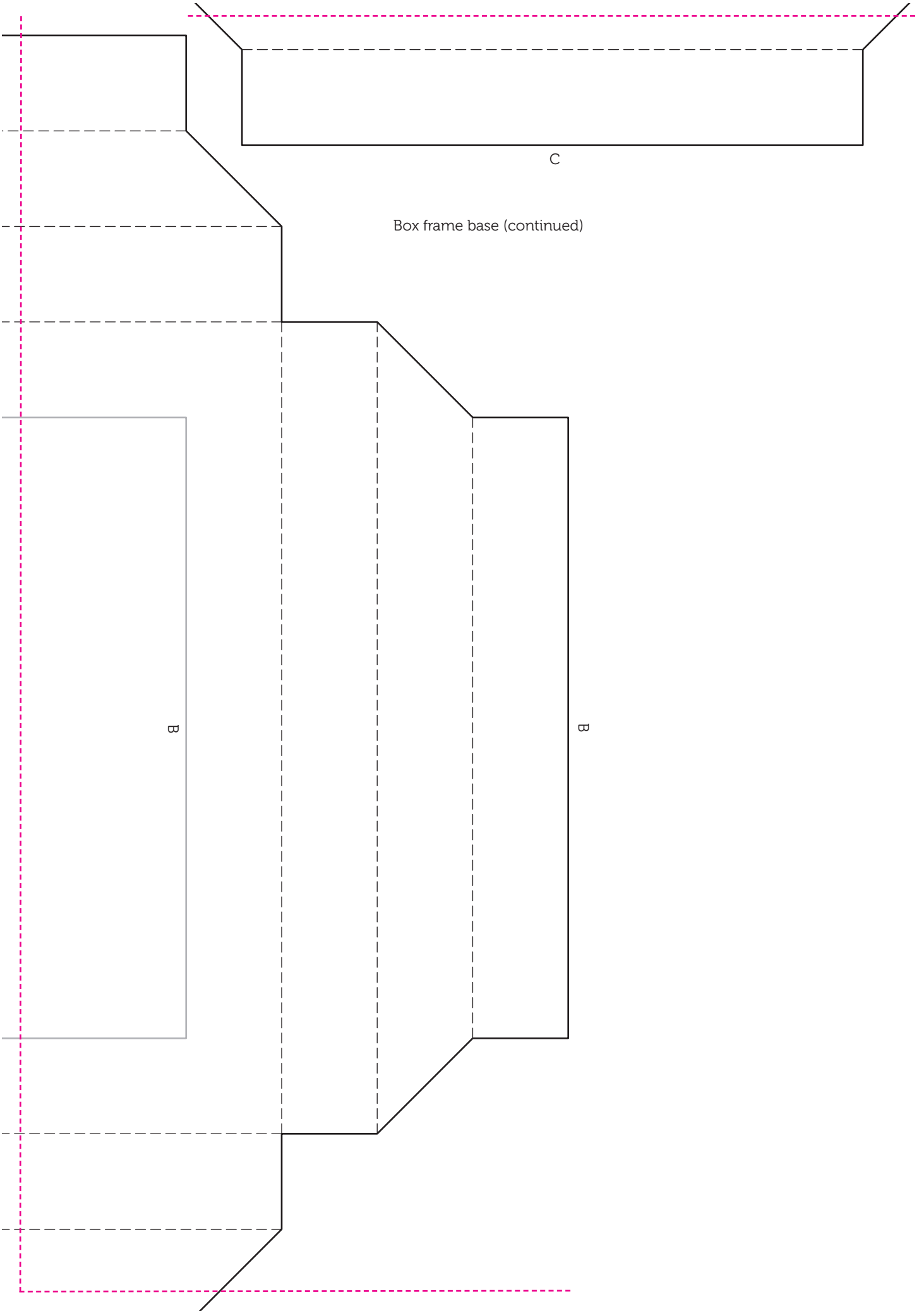
Front frame



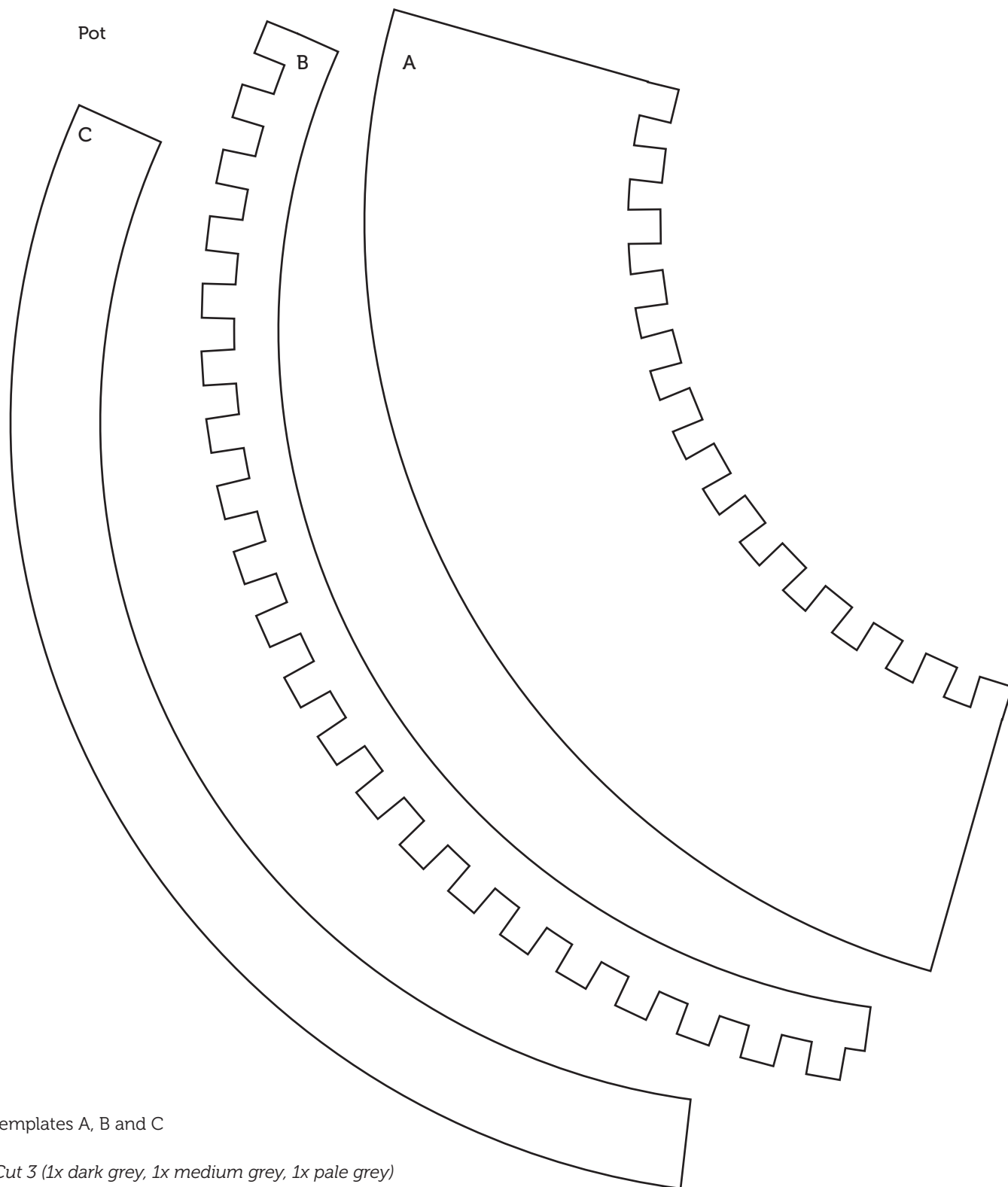
Box frame base

Cut along solid lines; score
and fold along dashed lines

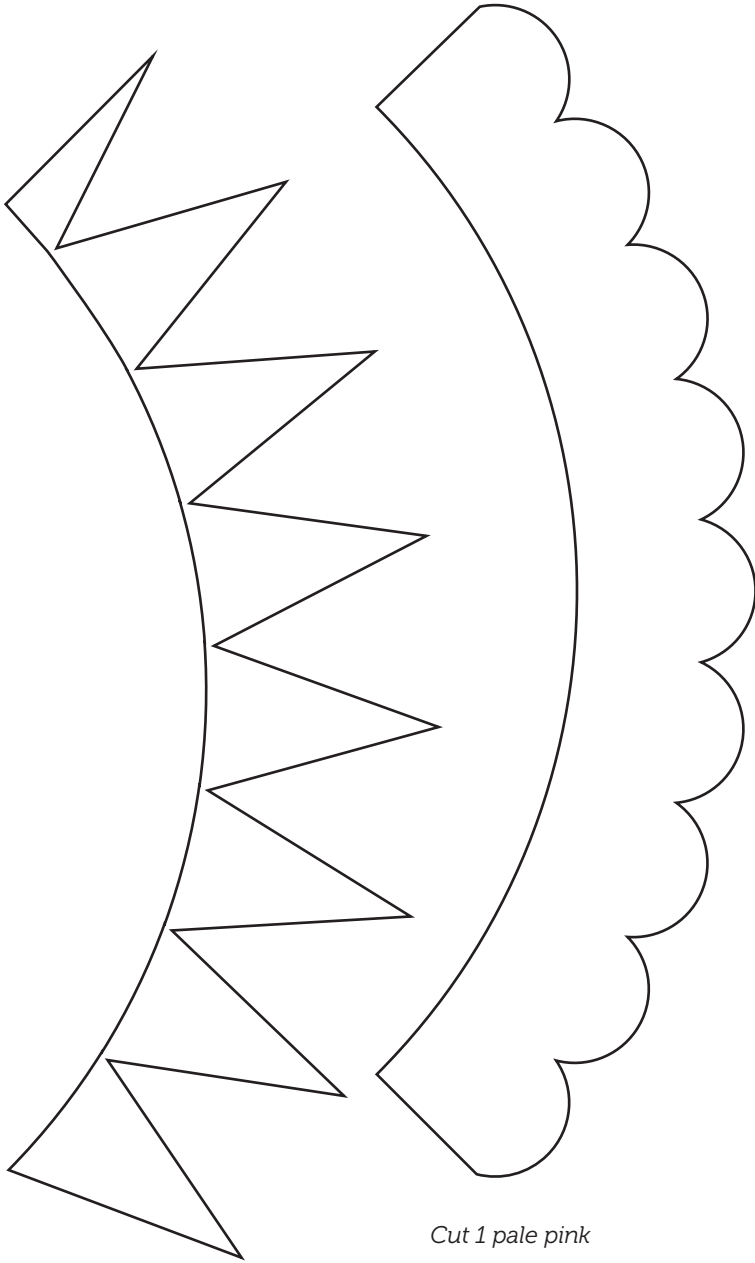




THREE LITTLE CACTI POTS

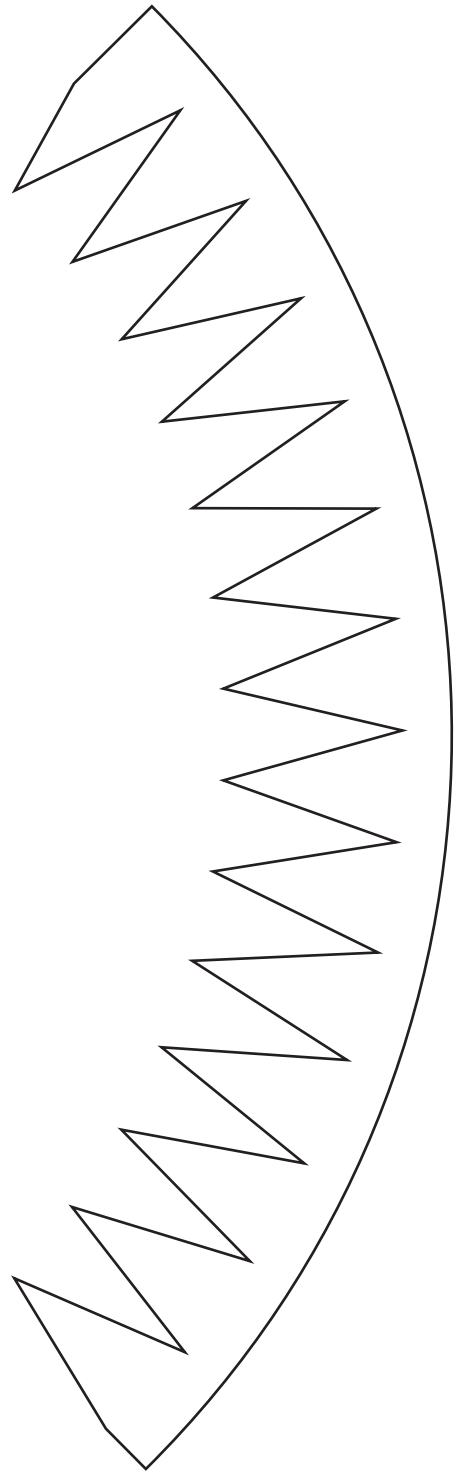


Pot (continued)



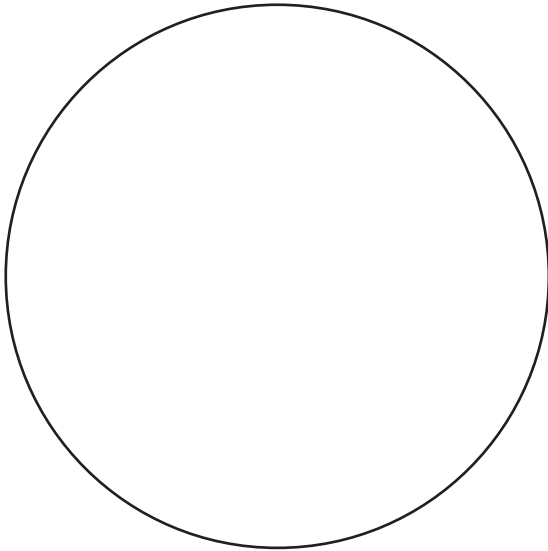
Cut 1 pale pink

Cut 1 dark grey

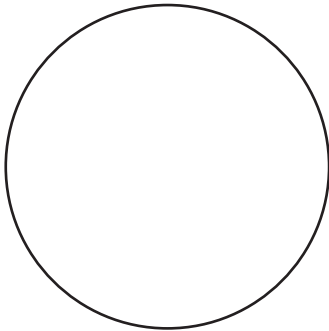


Cut 1 yellow

Pot (continued)



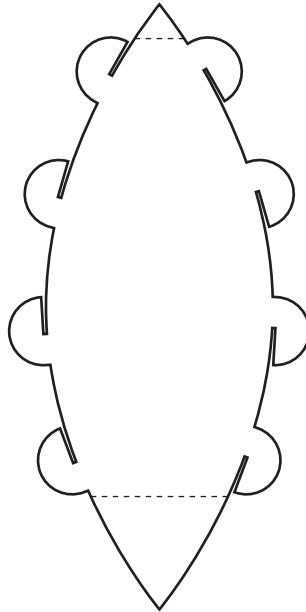
Large circle
Cut 1 dark grey, 1 medium grey, 1 pale grey, 1 brown and 2 tan



Small circle
Cut 2 dark grey, 2 medium grey, 2 pale grey

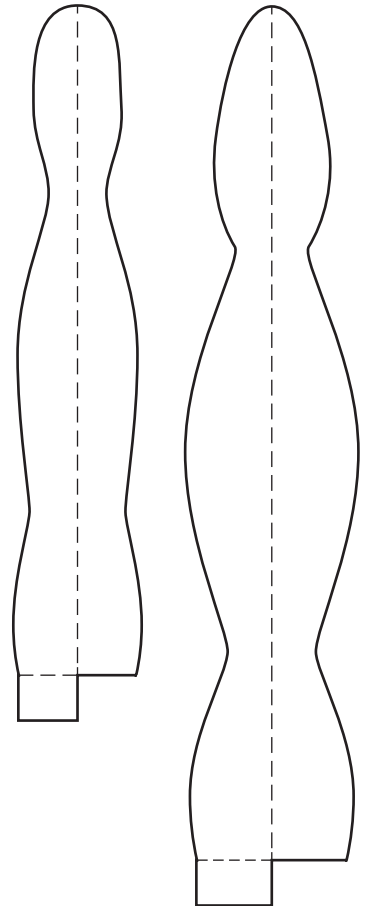
Score and mountain fold along dotted lines; score and valley fold along dashed lines

Spiky spherical cactus

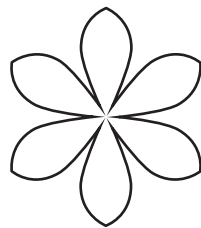


Cut 6 dark green

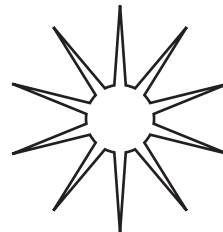
Tall, thin cacti



Cut 4 pale green



Cut 2 orange



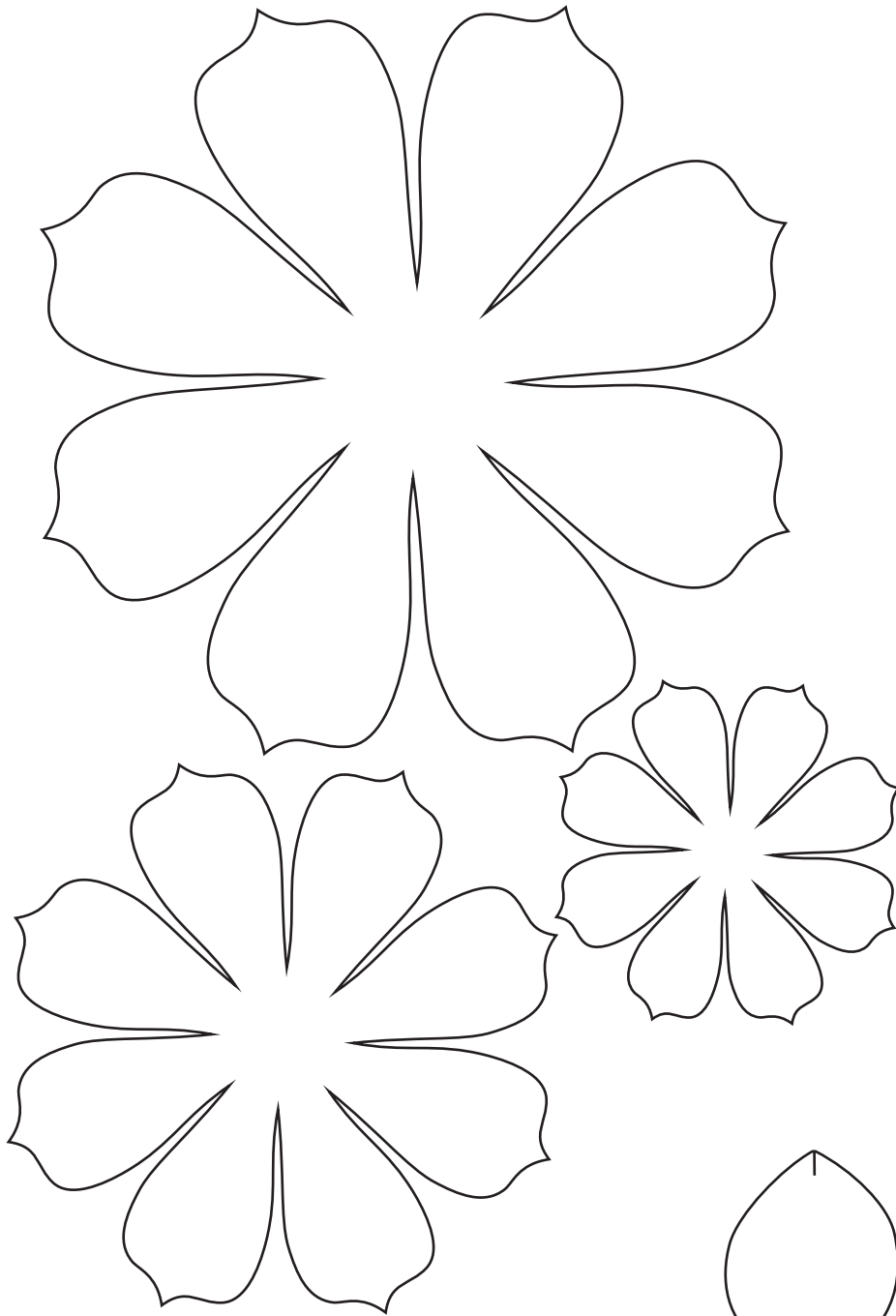
Cut 12 dark green



Cut 6 yellow

Succulent

Cut 1 of each pale green



Score and mountain fold along dotted lines; score and valley fold along dashed lines

Slotted cactus

Cut 1 of each dark green

